

iBX-SWU640B-724



KEY FEATURES

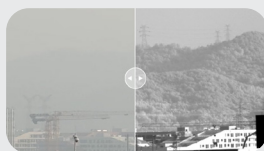
This high-performance industrial camera features a 3/4" InGaAs sensor with a 900-1700nm spectral range, delivering 724fps@640x512 high-speed imaging. Equipped with a global shutter, 14-bit dynamic range, and -30° C~60° C operational stability.

- Spectral Range: 900-1700nm
- Up to 724fps@640x512 (8-bit) and 12-bit high dynamic range.
- Optional USB3.0 Interface
- This camera employs Active Thermoelectric Cooling (TEC) technology to stabilize the sensor temperature at 40° C below ambient

TYPICAL APPLICATIONS



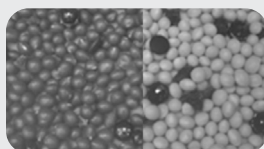
Fruit Spoilage Detection



Fog Penetration



Inspection of Contents In Packaging



Sorting Materials

► IMAGE SPECIFICATION

| Feature | iBX-SWU640B-724 | |
|--------------------|--|---------|
| Resolution | 640x512 | |
| Frame Rate (FPS) | 724 | 579 |
| Data Format | Mono 8/Packet12 | Mono 14 |
| Sensor | InGaAs CMOS | |
| Sensor Size | 3/4" | |
| Pixel Size | 15 x 15 μm | |
| Spectral Range | 900~1700nm | |
| Memory | 512MB | |
| Gain | 138.6e-/ADU(LG), 5.54e-/ADU(MG), 1.2e-/ADU (HG) | |
| QE | 75%@1350nm | |
| Dynamic Range | 70.59dB(LG), 67.96dB(MG), 47.98dB(HG) ¹ | |
| Readout Noise | 586.82e(LG), 35.05e(MG), 68.44e(HG) | |
| Full Well Capacity | 1986426.78e(LG), 87649.83Ke(MG), 17147.351e(HG) ¹ | |
| Maximum SNR | 62.98dB(LG), 49.43dB(MG), 42.34dB(HG) | |
| Dark Current | 30fa@0.1V&18°C | |
| Exposure Time | 16us~1s | |
| Shutter | Global Shutter | |

Note1: LG: CDS-OFF, DeNoise-ON; MG: CDS-ON, DeNoise-OFF; HG: CDS-ON, DeNoise-OFF

► FUNCTION

| | |
|---------------|---------------------------------|
| Cooling Delta | Typically "40° C" below ambient |
|---------------|---------------------------------|

► CONNECTIVITY

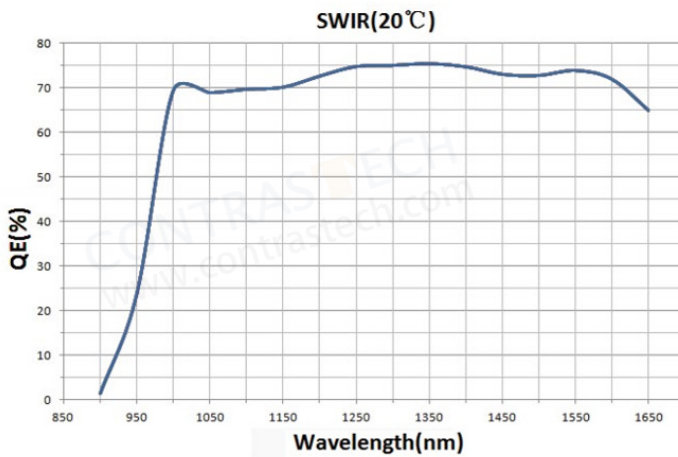
| | |
|-------------------|---|
| Power Interface | 12V DC |
| Power Consumption | 8.4W (TEC OFF) / <16W (TEC ON) |
| Digital I/O | 1 opto-isolated input, 1 opto-isolated output, 2 non-isolated I/O ports |
| Data Interface | USB3.0 |
| Lens Mount | C |

iBX-SWU640B-724

► ENVIRONMENT / SIZE

| | |
|-------------------|--------------------------------------|
| Temperature Range | Operating -30~60°C, Storage -40~85°C |
| Humidity | 20%~80%, RH, non-condensing |
| Size | 68x68x90.3mm/485g |

► SPECTRAL RESPONSE



FOR MORE INFORMATION CONTACT



✉ market@contrasttech.com

☎ 86-571-89712238

🌐 www.contrasttech.com

MORE PRODUCTS

