



CONTRAS**T**TECH

# ContrasTech

---

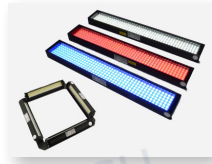
## Light Controller



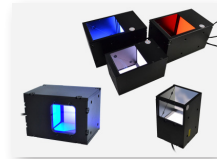
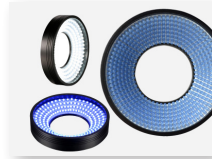
Model	Drive Mode	Input Voltage	Output Voltage	Power	Output Current	Channel	Output Port	Adapt to line light
<b>Digital Controller</b>								
VT-LT4-0506PWDC-2	Constant Current	88V-264V	5V	Total:6W/Single :3W Expandable: Total:12W/Single:6W	/	2	SMP-03V	
VT-LT4-2420PWDC-2	Constant Voltage	88V-264V	24V	Total:20W Single:20W	/	2	SMP-03V	
VT-LT4-2460PWDC-4 OOP	Constant Voltage	88V-264V	24V	Total:60W Single:25W	/	4	SMP-03V	
VT-LT4-24150PWDC-4	Constant Voltage	88V-264V	24V	Total:150W Single:70W	/	4	SMP-03V	
VT-LT4-24200PWDC-2	Constant Voltage	170V-264V	24V	200W	/	2	19M-2E	
VT-LT3-24240PWDC-2	Constant Current	100V-120V(Ver.A) 200V-240V(Ver.B)	24V	240W	Total:10A Single:10A	2	19M-5	√
VT-LT3-24500PWDC-2	Constant Voltage	100V-240V	24V	480W	Total:20A Single:light 9A, fan 1A	2	19M-2E	
VT-LT4-48300PWDC-1	Constant Current	90V-264V	48V	300W	0-6A	1	GX20-4T	
<b>Stroboscopic Controller (With Brightening Module)</b>								
VT-LT3-PLU24120-4	Constant Voltage	100V-240V	48V	120W	10A (Instantaneous Value)	4	SMP-03V-BC	
VT-LT3-PLU24200-2	Constant Voltage	100V-240V	48V	200W	50A (Instantaneous Value)	2	12M-2	
VT-LT3-PLU24200-4	Constant Voltage	100V-240V	48V	200W	25A (Instantaneous Value)	4	SMP-03V-BC	
<b>Line Source Stroboscopic Controller (With Brightening Module)</b>								
VT-LT3-PLU481000LI-6	Constant Voltage	100V-240V	48V	1000W	Total:25A Single:25A	6	16M-2	√
<b>Line Source Controller</b>								
VT-LT3-24300PWLIN-1	Constant Voltage	100V-240V	24V	≤ 300W	12.5A	1	AM20K4Z	√
VT-LT3-48600PWLIN-2	Constant Current	100V-120V(Ver.A) 200V-240V(Ver.B)	48V	600W	Total:12A Single:6A	2	19M-6	√
VT-LT3-48300PWLIN-2	Constant Current	100V-240V	48V	≤ 300W	Total:6A Single:6A	2	16M-6	√
VT-LT3-48600PWLIN-1	Constant Current	100V-120V(Ver.A) 180V-240V(Ver.B)	48V	≤ 600W	Total:12A Single:6A	1	19M-6	√
VT-LT3-48600PWLIN-2	Constant Current	180V-240V	48V	≤ 600W	Total:12A Single:6A	2	19M-6	√
VT-LT3-48800PWLIN-1	Constant Current	100-240V	48V	< 800W	14A	1	19M-6	√
VT-LT3-48800PWLIN-2	Constant Current	100-240V	48V	Total: ≤ 800W Single: ≤ 400W	14A	2	19M-6	√
VT-LT3-481200PWLIN-1	Constant Current	100V-240V	48V	≤ 1200W	Total:24A Single:12A	1	19M-6	√
<b>Analog Controller</b>								
VT-LT4-0506PWAC-2	Constant Current	88-264	5V	Total:6W Single:3W	/	2	SMP-03V	
VT-LT3-2460PWAC-4	Constant Voltage	100-240	24V	60W	Total:2.5A Single:2.5A	4	SMP-03V-BC	

PS: \*Default -Ver.B version voltage

OOP : Out of Production



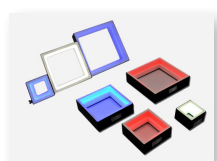
Line illumination  
**Li/ LiN+/LiC /MLi Series**  
 Bar illumination  
**HL/HL+/HLDM Series**



Ring illumination  
**HR /HR+/LR Series**  
 Coaxial illumination  
**C/CP/CX Series**



Bottom Flat Backlights illumination  
**BF/BFP Series**  
 Side Flat Backlights illumination  
**BFC/BFCP/BFCK Series**



Shadowless Ring illumination  
**WR/LWR/GWR Series**  
 Shadowless Square illumination  
**MT Series**



Dome illumination  
**DM Series**  
 Tunnel shadowless illumination  
**T Series**



Spot illumination  
**PI Series**  
 Three-color illumination  
**AOI Series**



Spot illumination  
**PI Series**  
 Fiber LED Lights Source Unit  
**CO Series**



Telecentric illumination  
**CLW-LIT Series**  
 UV/IR/Waterproof/Corrosion  
 Resistant illumination

More OEM/ODM Led illumination available, and please contact your sales engineer for projects confirmation.

# Vision And More Available

让工业更智能，让视觉更简单！



SWIR Camera  
Industrial Camera



Macro Lens  
Industrial Lens



Microscope



System Solution  
No-programming Software



CONTRASTTECH

ADD: No 8, Xiyuan 9th Road Hangzhou 310030 China

TEL: 86-571-89712238

Email: market@contrasttech.com

Web: www.contrasttech.com



Ver.24.09