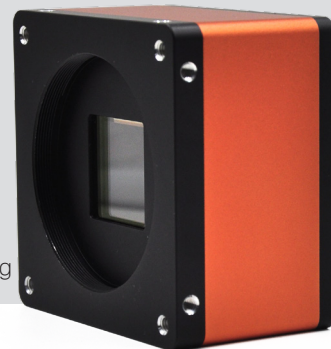


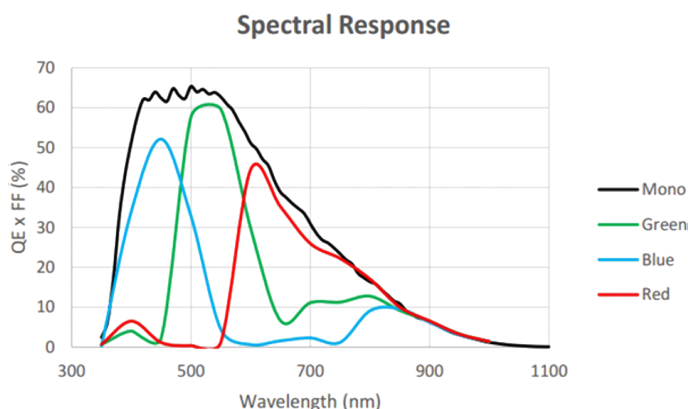
- 65MP @31 fps
- CoaXPress uses CXP-6, theoretical bandwidth 4 x 6.25Gbps
- Compatible with CoaXPress Protocol, GenICam Standard, and the third-party software based on these protocol and standard
- Support Windows operating platform
- Support PoCXP power supply and DC 24V power supply

Applied range • Printing • Textile • Railway • Logistics • Metallurgy • Food • Pharmaceutical • Material sorting



Camera	Mars65MG-31xm-M58
Resolution [H*V]	9344 x 7000
Sensor	GMAX3265
Sensor Type	CMOS
Pixel Size [μm]	3.2 x 3.2
Frame Rate [fps]	31
Data Bit	12 bit
Exposure Time	27 μs ~5s
Dynamic Range	66dB
Mono/Color	Mono
Image Format	Mono8/10/12
Interface	CoaXPress
Synchronization	Via hardware trigger、software trigger or free run mode
Programmable Control [ISP]	Image resolution、RGB Gain、 Exposure time、 Gamma form、 Image rollovers、 Raw、 LUT、 Black level correction
Housing Size [l*w*h]	72.0 x 72.0 x 70.0 mm (670g)
Operating Temperature	-30~80 ° C (Storage), -30~50° C (Working)
Lenses Mount	M58*0.75
Digital I/O	Opto-isolated input x 3, opto-isolated output x 3, RS232 x 1
Power Input	PoCXP / DC 24V
Power Consumption	24V@ \approx 21.6W
Driver	Frame Grabber control software compliant with CoaXPress protocol
Operating System	Windows
Conformity	CoaXPress, GenICam

Spectral Response



Dimensions

