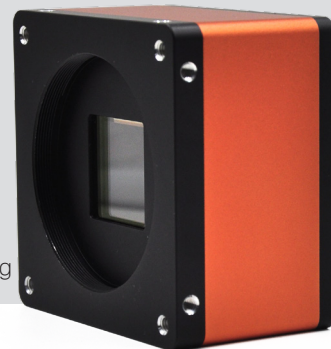




Mars151MS-6xm-M72

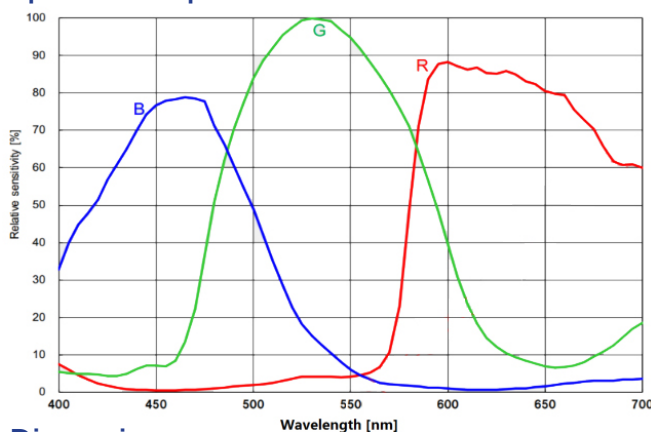
- 151MP @6.2 fps
- CoaXPRESS uses CXP-6, theoretical bandwidth 4 x 6.25Gbps
- Compatible with CoaXPRESS Protocol, GenICam Standard, and the third-party software based on these protocol and standard
- Support Windows operating platform
- Support PoCXP power supply and DC 24V power supply

Applied range • Printing • Textile • Railway • Logistics • Metallurgy • Food • Pharmaceutical • Material sorting

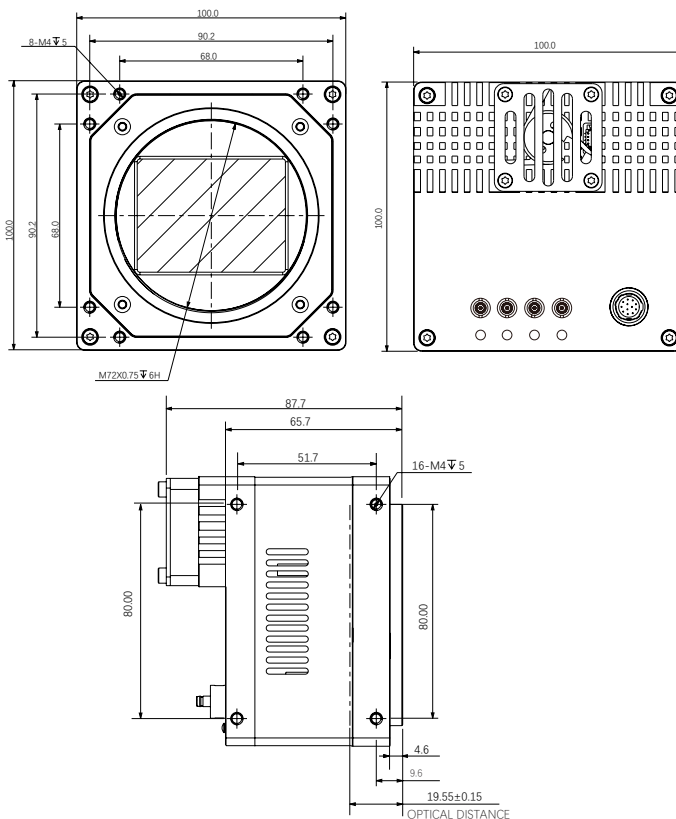


Camera	Mars151MS-6xm-M72
Resolution [H*V]	14160 x 10640
Sensor	Sony IMX411
Sensor Type	CMOS
Pixel Size [μm]	3.76 x 3.76
Frame Rate [fps]	6.2
Data Bit	12 bit
Exposure Time	30 μs ~5s
Dynamic Range	90dB
Mono/Color	Mono
Image Format	Mono8/10/12
Interface	CoaXPRESS
Synchronization	Via hardware trigger, software trigger or free run mode
Programmable Control [ISP]	Image resolution, Exposure time, Gamma form, Image rollovers, Raw, LUT, Black level correction
Housing Size [l*w*h]	100.0 x 100.0 x 83.0 mm (850g)
Operating Temperature	-30~80 ° C (Storage), -30~50° C (Working)
Lenses Mount	M72*0.75
Digital I/O	Opto-isolated input x 3, opto-isolated output x 3, RS232 x 1
Power Input	PoCXP / DC 24V
Power Consumption	24V@ \approx 18W
Driver	Frame Grabber control software compliant with CoaXPRESS protocol
Operating System	Windows
Conformity	CoaXPRESS, GenICam

Spectral Response



Dimensions



No.8, Xiyuan 9th Road West Lake District, Hangzhou 310030 China
 Tel: 86-571-89712238 Web: www.contrastech.com
 Email: market@contrastech.com

