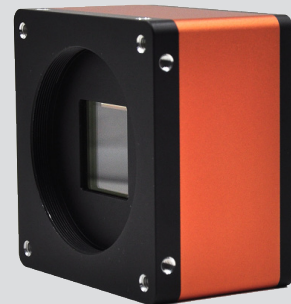




Mars65MG-13cm/cc

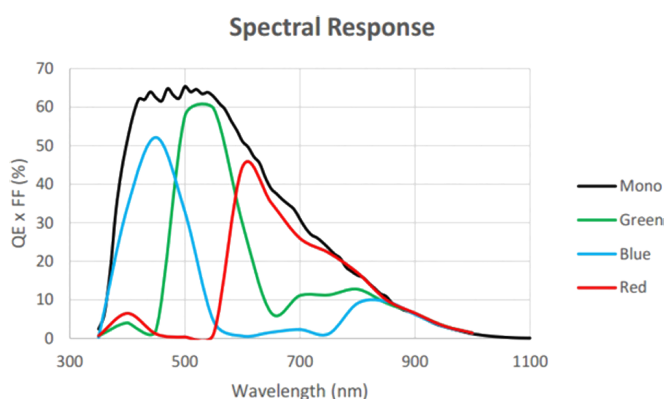
- 65MP @12.5(85M,10TAP)
- Compatible with Cameralink protocol and GenICam standard
- Support triggering via CameraLink frame grabber
- Support Windows operating platform
- Support DC 24V power supply



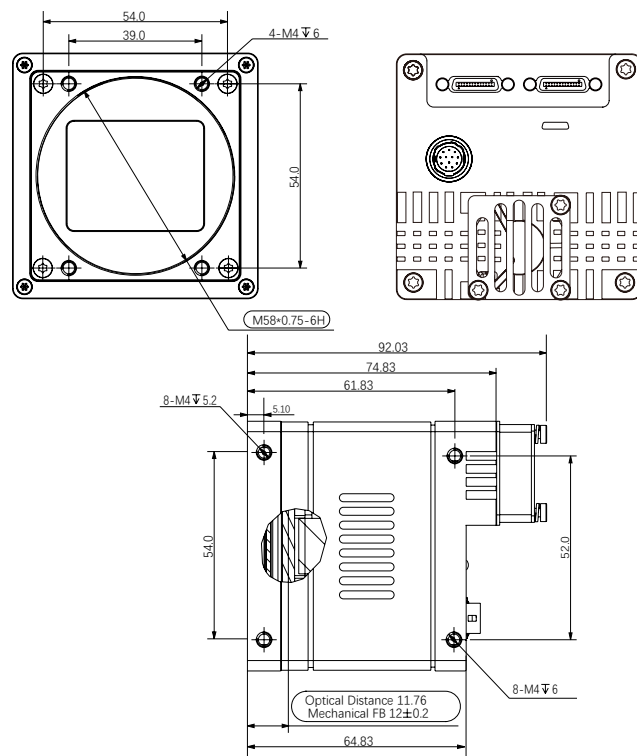
Applied range • Printing • Textile • Railway • Logistics • Metallurgy • Food • Pharmaceutical • Material sorting

| Camera | Mars65MG-13cm/cc |
|----------------------------|---|
| Resolution [H*V] | 9280 x 6992 |
| Sensor | GMAX3265 |
| Sensor Size | 37.4mm(29.9mm x 22.4mm) |
| Pixel Size [μm] | 3.2 x 3.2 |
| Frame Rate [fps] | 12.5 |
| Data Bit | 12bit |
| Exposure Time | 16μS~15S |
| Dynamic Range | 66dB |
| Mono/Color | Mono/Color |
| Image Format | Monochrome: Mono8 Color: BayerRG8 |
| Interface | Cameralink |
| Synchronization | Via hardware trigger、software trigger or free run mode |
| Programmable Control [ISP] | Image resolution、RGB Gain、 Exposure time、 Gamma form、 Image rollovers、 Raw、 LUT、 Black level correction |
| Housing Size [l*w*h] | 72.0 × 72.0 × 65.0 mm (490g) |
| Operating Temperature | -30~80 ° C (Storage), -30~50° C (Working) |
| Lenses Mount | M58*0.75(FBL 12) |
| Digital I/O | Cameralink, used for camera control and data transmission; |
| Power Input | DC 24V |
| Power Consumption | 24V@6.83W |
| Driver | Mars Series Camera Software Suite (iCentral) or 3rd Party Cameralink Protocol Software |
| Operating System | Windows |
| Conformity | Cameralink, GenICam |

Spectral Response



Dimensions



No.8, Xiyuan 9th Road West Lake District, Hangzhou 310030 China
 Tel: 86-571-89712238 Web: www.contrastech.com
 Email: market@contrastech.com

