



### Mars16001-L50cm

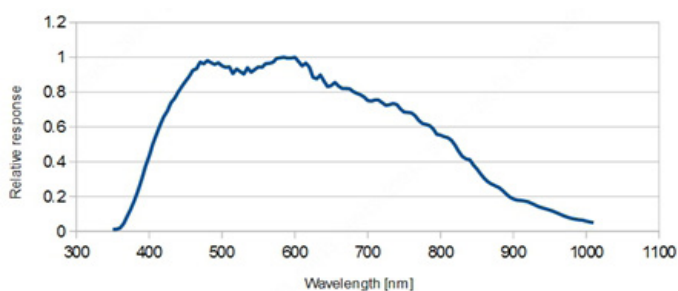
- 16K @50 KHz
- CameraLink supports Full, Medium, Base, and Deca, can provide up to 6.8Gbps theoretical bandwidth
- Compatible with Cameralink Protocol, GenICam Standard, and the third-party software based on these protocol and standard
- Support Windows



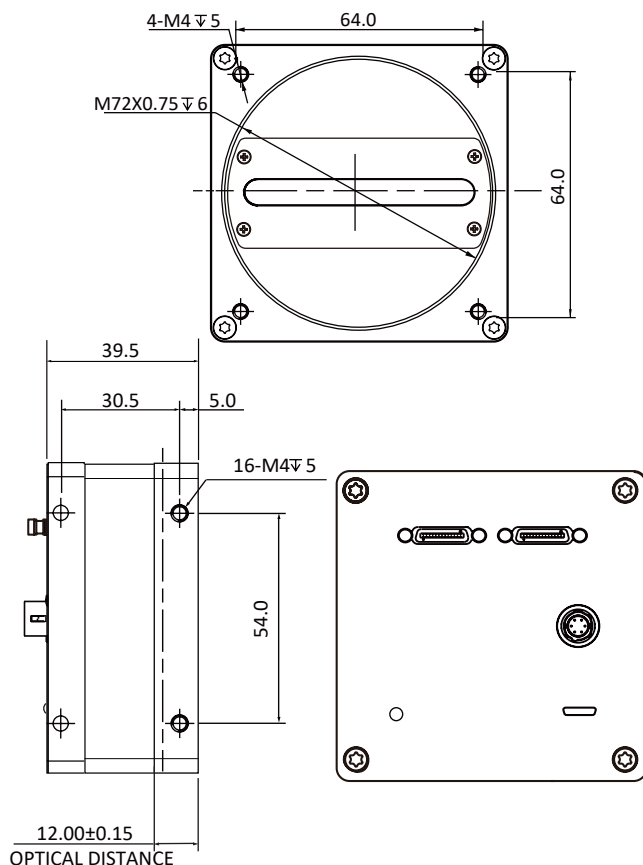
**Applied range** • Printing • Textile • Railway • Logistics • Metallurgy • Food • Pharmaceutical • Material sorting

Camera	Mars16001-L50cm
Resolution [H*V]	16384 x 1
Sensor Type	CMOS
Pixel Size [μm]	3.5 × 3.5
Line Frequency [KHz]	50
Data Bit	12bit
Exposure Time	3μs~100ms
Dynamic Range	64dB
Mono/Color	Mono
Image Format	Mono8/10
Interface	CameraLink
Synchronization	Via hardware trigger、software trigger or free run mode
Pixel Clock Speed	34M/51M/68M/85M
Housing Size [l*w*h]	80.0 × 80.0 × 39.5 mm (390g)
Operating Temperature	-30~80 ° C (Storage), -30~50° C (Working)
Lenses Mount	M72*0.75, BFL 12 mm
Power Input	DC 12-24V
Power Consumption	6W
Driver	Mars Series Camera Software Suite (iCentral) or third-party CameraLink protocol software
Operating System	Windows
Conformity	CameraLink ,GenICam

### Spectral Response



### Dimensions



No.8, Xiyuan 9th Road West Lake District, Hangzhou 310030 China  
 Tel: 86-571-89712238 Web: [www.contrastech.com](http://www.contrastech.com)  
 Email: [market@contrastech.com](mailto:market@contrastech.com)