

# Bottom/Side Parallel Flat Backlight Illumination -BFP /BFCP Series

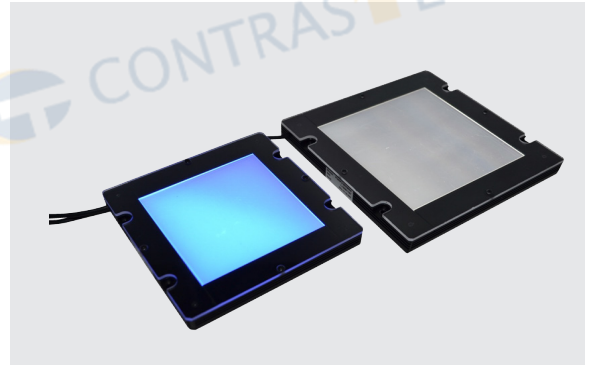
Flat lights provide large parallel emitting area.

## Features

- Optimizing the lights with unique material, making the light radiate in parallel.
- The light is with standard mold shell and compact structure, easy to install.

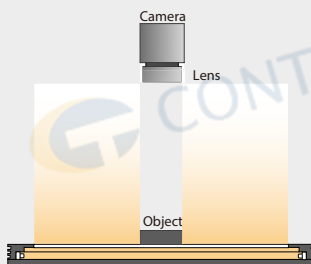
## Applications

- Dimension measuring, appearance inspection.
- Identification and inspection of the large size mechanical parts.



## Illumination Structure

Compared with BFC series, BFCP series add an unique parallel plate above the diffusion plate to make the light radiate in parallel



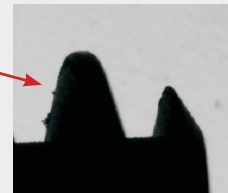
## Examples of Parallel Flat Backlight Images

### Comparison of screw thread image

Using parallel flat light could illuminate the edge of the screw thread more clearly and precisely.



**Generic Flat Lighting (BFC series)**  
Image of screw thread and enlarged view



**Parallel Flat Lighting (BFCP series)**  
Image of screw thread and enlarged view

## Common Specifications

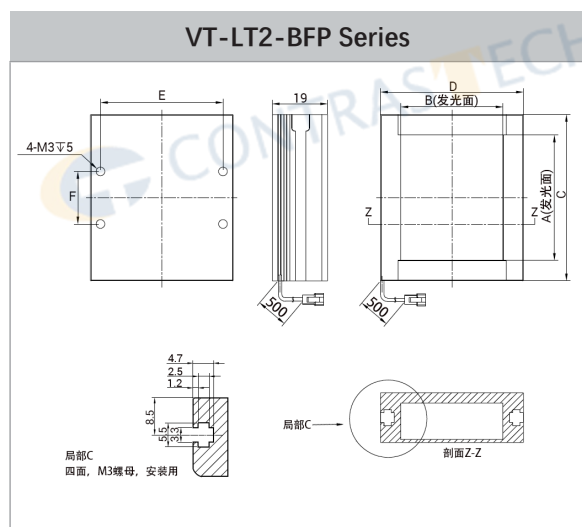
Input voltage	24 VDC
Wavelength range	Red: 620-630nm; Blue: 460-475nm; Green: 520-530nm;
Color temperature (white)	5800-7500K
Operating environment (indoor)	Temperature: 0~40°C Humidity: 20% to 85% RH (with no condensation)
Life time	White:30,000hrs, Red: 60,000hrs (Depends on the operating environment, not a guarantee)
Case material	Aluminum alloy, Resin

## Explanation of Model Code

VT-LT2-BFP/BFCP	100	100	(W/B/R)
Series	Emitting Length	Emitting Width	Color
LT2-BFP	Flat lights provide area illumination with LED beads distributed on the bottom.		
LT2-BFCP	Flat lights provide area illumination with LED beads distributed on the inner side.		

Model No.	Optical spec.		Working Distance	Electrical specifications (GREEN / NIR / UV Accept custom)			Dimensions		
	Light Area			Recommended WD (mm)	Supply Voltage (v)	Power cons. (w) ●	Power cons. (w) ● ○ ●	Length (mm)	Width (mm)
Length (mm)	Width (mm)								
VT-LT2-BFP2727	27	27	30-100	24	3.0	10.9	41	41	19
VT-LT2-BFP4335	43	35	30-100	24	5.9	7.9	57	49	19
VT-LT2-BFP5050	50	50	30-100	24	6.0	9.3	64	64	19
VT-LT2-BFP6360	63	60	30-100	24	6.8	12.6	77	74	19
VT-LT2-BFP8375	83	75	30-100	24	4.4	10.0	97	89	19
VT-LT2-BFP100100	100	100	30-100	24	6.5	12.1	114	114	19
VT-LT2-BFP140105	140	105	30-100	24	6.7	26.3	154	119	19
VT-LT2-BFP160120	160	120	30-100	24	8.4	16.8	174	134	19
VT-LT2-BFP20050	200	50	30-100	24	8.2	16.6	214	64	19
VT-LT2-BFP200150	200	150	30-100	24	15.5	35.0	214	164	19
VT-LT2-BFP211200	211	200	30-100	24	12.3	24.0	225	214	19
VT-LT2-BFP224170	224	170	30-100	24	36.3	36.3	238	184	19

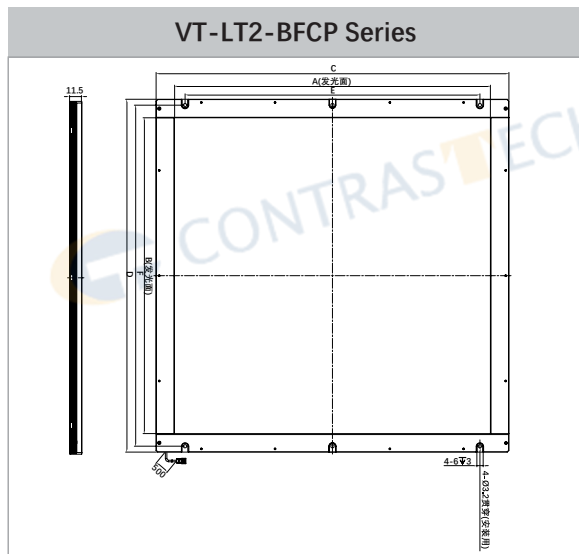
## Dimension (mm)



Model No.	Dimensions					
	A	B	C	D	E	F
VT-LT2-BFP2727	27	27	41	41	34	18
VT-LT2-BFP4335	43	35	57	49	42	18
VT-LT2-BFP5050	50	50	64	64	57	18
VT-LT2-BFP6360	63	60	77	74	67	25
VT-LT2-BFP8375	83	75	97	89	82	50
VT-LT2-BFP100100	100	100	114	114	107	50
VT-LT2-BFP140105	140	105	154	119	112	80
VT-LT2-BFP160120	160	120	174	134	127	80
VT-LT2-BFP20050	200	50	214	64	57	80
VT-LT2-BFP200150	200	150	214	164	157	80
VT-LT2-BFP211200	211	200	225	214	207	80
VT-LT2-BFP224170	224	170	238	184	177	80

Model No.	Optical spec.		Working Distance	Electrical specifications (GREEN / NIR / UV Accept custom)			Dimensions		
	Light Area			Recommended WD (mm)	Supply Voltage (v)	Power cons. (w) ●	Power cons. (w) ● ○ ●	Length (mm)	Width (mm)
Length (mm)	Width (mm)								
VT-LT2-BFCP5050	50	50	30-100	24	3.0	10.9	85	85	11.5
VT-LT2-BFCP7070	70	70	30-100	24	5.9	7.9	105	105	11.5
VT-LT2-BFCP8080	80	80	30-100	24	6.0	10.0	115	115	11.5
VT-LT2-BFCP9090	90	90	30-100	24	6.3	12.6	125	125	11.5
VT-LT2-BFCP110110	110	110	30-100	24	6.8	12.6	145	145	11.5
VT-LT2-BFCP150100	150	100	30-100	24	4.4	10.0	185	135	11.5
VT-LT2-BFCP200160	200	160	30-100	24	6.5	12.1	235	195	11.5
VT-LT2-BFCP200200	200	200	30-100	24	6.7	26.3	235	235	11.5
VT-LT2-BFCP250200	250	200	30-100	24	8.4	16.8	285	235	11.5
VT-LT2-BFCP300200	300	200	30-100	24	8.2	16.6	335	235	11.5
VT-LT2-BFCP300300	300	300	30-100	24	15.5	35.0	335	235	11.5
VT-LT2-BFCP400300	400	300	30-100	24	12.3	24.0	435	335	11.5
VT-LT2-BFCP600400	600	400	30-100	24	14.6	36.3	635	435	11.5

Dimension (mm)



Model No.	Dimensions					
	A	B	C	D	E	F
VT-LT2-BFCP5050	50	50	85	85	-	-
VT-LT2-BFCP7070	70	70	105	105	50	94
VT-LT2-BFCP8080	80	80	115	115	60	104
VT-LT2-BFCP9090	90	90	125	125	70	114
VT-LT2-BFCP110110	110	110	145	145	90	134
VT-LT2-BFCP150100	150	100	185	135	130	124
VT-LT2-BFCP200160	200	160	235	195	180	184
VT-LT2-BFCP200200	200	200	235	235	180	224
VT-LT2-BFCP250200	250	200	285	235	230	224
VT-LT2-BFCP300200	300	200	335	235	280	224
VT-LT2-BFCP300300	300	300	335	235	280	324
VT-LT2-BFCP400300	400	300	435	335	380	324
VT-LT2-BFCP600400	600	400	635	435	580	424