

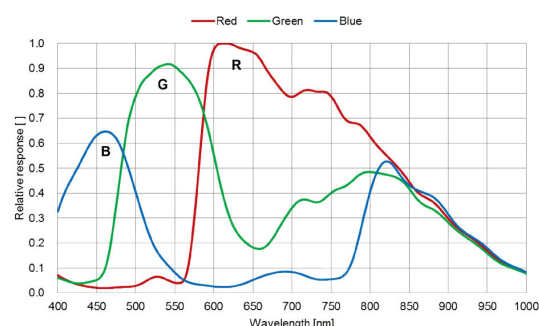
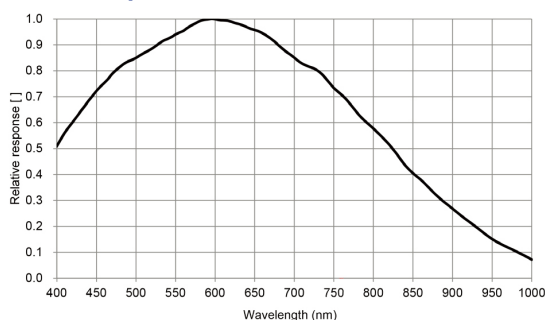
- 31MP resolution @3.9 fps
- Adopts GigE interface and max. transmission distance of 100 meters without relay
- Compatible with GigE Vision Protocol, GenICam Standard, and the third-party software based on these protocol and standard
- Support Windows、Linux
- Up to 128 MB local memory for burst transmission and retransmission



Applied range • Defect Detection • Surface Patch Detection • Visual Positioning • Size Measuring • QR Code Reading • VR/AR • Logistics

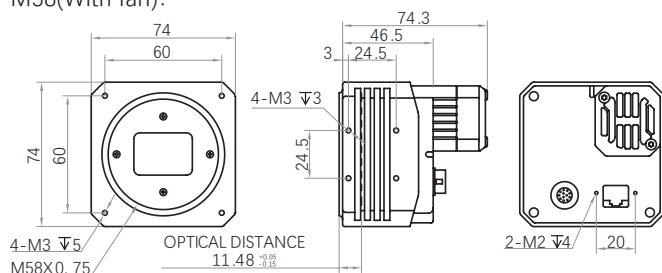
Camera	LEO 31MS-4gm/gc
Resolution [H*V]	6464 × 4852
Sensor	Sony IMX342
Sensor Size	22.3 mm × 16.7 mm
Sensor Technology	Global, CMOS
Pixel Size [μm]	3.45 × 3.45
Frame Rate [fps]	3.9
Data Bit	8bit / 10bit / 12bit
Exposure Time	Monochrome: 36μs~2s Color: 36μs~10s
Dynamic Range	73dB
Mono/Color	Mono/Color
Image Format	Monochrome: Mono8/10/10p/12/12p Color: Mono 8/10/12,Bayer RG 8/10/10p/12/12p, YUV422Packed,YUV422_YUYV_Packed,RGB 8,BGR 8
Interface	GigE
Synchronization	Via hardware trigger、software trigger or free run mode
Programmable Control [ISP]	Image resolution、RGB gain、Exposure time、Contrast ratio、Gamma form、Image rollovers、Raw、LUT、Black level correction
Housing Size [l*w*h]	M58 (With fan):74 × 74 × 74.3 mm (550g) F-Mount(With fan):74 × 74 × 80.1 mm(600g)
Operating Temperature	-30~70 ° C (Storage), 0~50° C (Working)
Lenses Mount	M58, BFL 11.48 mm F-Mount, BFL 46.5mm
Digital I/O	Opto-isolated input x 1, opto-isolated output x 1, bi-directional custom non-isolated I/O x 1,RS232 x 1
Power Input	DC 9-24V
Power Consumption	12W @9W
Driver	LEO Series Camera Software Suite (iDatum) or 3rd party GigE Vision Software
Operating System	Windows, Linux
Conformity	GigE Vision, GenICam

Spectral Response



Dimensions

M58(With fan):



F-Mount(With fan):

