



CONTRASTTECH

www.contrasttech.com



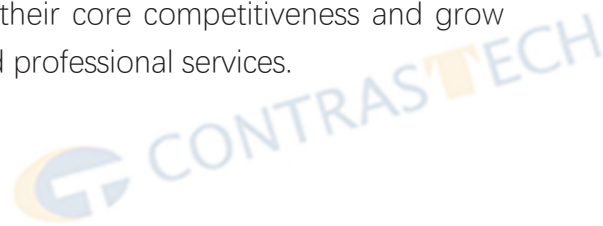


公司简介

COMPANY INTRODUCTION

Hangzhou Contrastech Co.,Ltd. was established in 2008, dedicated to professional image technology and machine vision. The major products include Microscope, industrial camera, scientific standard camera, high definition frame grabber card, industrial FA lens, Telecentric lens, machine vision lights and image processing software. Nearly 20 years of industry and market experience, so that Contrastech has mature complete set of solutions for machine vision and industrial automation, and be widely used in intelligent manufacturing, high precision non-contact measuring, deep learning, medical imaging and other fields.

Contrastech is committed to provide advanced application solutions for clients in the field of vision and image, and help customers to improve their core competitiveness and grow together with customers with high-quality products and professional services.



PRODUCT CONTENTS | 产品目录

- Zoom-Stereo Microscope01-05
 - Two-gear Stereo Microscope06-08
 - Digital Microscope09-10
 - Biological Microscope11-12
 - Stereo Zoom Video Microscope13
- Accessories (Head,Stand,Holder,Eyepiece,Objective,Camera Adapter,Illuminator).....14-23



VT-ZM6745 Series Zoom-Stereo Microscope

VT - ZM 6745 Series Zoom-Stereo Microscope is fully coated optical system with super high resolution. It is characterized by brand-new optical design, the best reproduction and true color image. Once brought in focus, image remains clear and sharp throughout the whole zoom range. It is ideal for industrial as well as for biological research where high precision, maximum working distance and large field coverage is required. The flat field parfocal zoom objectives provide continuously variable magnification from 3.35x to 270x depending upon the eyepiece and auxiliary lens used.



VT-ZM6745T-J4L



VT-ZM 6745-B9L

SPECIFICATION

Zoom Range: 0.67x-4.5x
 Zoom Ratio: 1:6.7
 Total Magnification: 6.7- 45x(Standard), 3.35-270x with optional lens
 Working Distance: 105mm(Standard), 26 - 287mm with optional lens
 Interpupillary Distance: 54 - 75mm
 Diopter Adjustment: +/- 5 diopters
 Binocular Tube: with an inclination of 45° for greater ease of observation
 Binocular Body: Can be rotated a full 360° and locked in any position desired.
 Trinocular Body: 50%/50%, with a vertical phototube

OPTIONS & ACCESSORIES

Eyepiece: WF10x / WF15x / WF20x / WF25x / WF30x
 Stand: A wide variety of stands for option. Refer to P.15-P.16
 Illumination: Fluorescent Ring Light, LED Ring Light, Halogen Lamp. Refer to P.21
 For Trinocular Body: Phototube, C -Mount for Camera. Refer to P.20

Optical Specification

Eyepiece	Standard		Auxiliary Lens 0.5X		Auxiliary Lens 1.5X		Auxiliary Lens 2X	
	W.D. 105mm		W.D. 177mm		W.D. 47mm		W.D. 26mm	
	Mag.	F.O.V (mm)	Mag.	F.O.V (mm)	Mag.	F.O.V (mm)	Mag.	F.O.V (mm)
10X/22mm	6.7X-45.0X	32.8-4.9	3.4X-22.5X	65.7-9.8	10.1X-67.5X	21.9-3.3	13.4X-90.0X	16.4-2.4
15X/16mm	10.1X-67.5X	23.9-3.6	5.0X-33.8X	47.8-7.1	15.1X-101.3X	15.9-2.4	20.1X-135.0X	11.9-1.8
20X/12mm	13.4X-90.0X	17.9-2.7	6.7X-45.0X	38.5-5.3	20.1X-135.0X	11.9-1.8	26.8X-180.0X	9.0-1.3
25X/9mm	16.8X-112.5X	13.4-2.0	8.4X-56.3X	26.9-4.0	25.1X-168.8X	9.0-1.3	33.5X-225.0X	6.7-1.0
30X/8mm	20.1X-135.0X	11.9-1.8	10.1X-67.5X	23.8-3.6	30.2X-202.5X	7.9-1.2	40.2X-270.0X	6.0-0.9

VT-ZML6745 Series Zoom-Stereo Microscope

VT-ZML6745 Series Zoom-Stereo Microscope is fully coated optical system with super high resolution. It offers sharp clear images with extremely great flatness and contrast. Once brought in focus, image remains clear and sharp throughout the whole zoom range. It comes with super wide-field high- eyepoint eyepieces. The flat field parfocal zoom objectives provide continuously variable magnification from 3.35x to 270x depending upon the eyepiece and auxiliary lens used. It' s an ideal instrument for those who require precision- oriented observation.



VT-ZML6745-B1



VT-ZML6745T-B1

SPECIFICATION

Zoom Range: 0.67x-4.5x

Zoom Ratio: 1:6.7

Total Magnification: 6. 7- 45x(Standard), 3.35-270x with optional lens

Working Distance: 105mm(Standard), 26-287mm with optional lens

Interpupillary Distance: 54 - 75mm

Diopter Adjustment: +/- 5 diopters

Binocular Tube:with an inclination of 45° or 60° for greater ease of observation

Binocular Body:Can be rotated a full 360° and locked in any position desired.

Trinocular Body:50%/50%, with a vertical phototube

OPTIONS&ACCESSORIES

Eyepiece:WF10x / WF15x / WF20x / WF25x / WF30x

Stand:A wide variety of stands for option. Refer to P.15-P.16

Illumination:Fluorescent Ring Light, LED Ring Light, Halogen Lamp. Refer to P.21

For Trinocular Body:Phototube, C -Mount for Camera. Refer toP.20

Optical Specification

Eyepiece	Standard		Auxiliary Lens 0.5X		Auxiliary Lens 1.5X		Auxiliary Lens 2X	
	W.D. 105mm		W.D. 177mm		W.D. 47mm		W.D. 26mm	
	Mag.	F.O.V (mm)	Mag.	F.O.V (mm)	Mag.	F.O.V (mm)	Mag.	F.O.V (mm)
10X/22mm	6.7X-45.0X	32.8-4.9	3.4X-22.5X	65.7-9.8	10.1X-67.5X	21.9-3.3	13.4X-90.0X	16.4-2.4
15X/16mm	10.1X-67.5X	23.9-3.6	5.0X-33.8X	47.8-7.1	15.1X-101.3X	15.9-2.4	20.1X-135.0X	11.9-1.8
20X/12mm	13.4X-90.0X	17.9-2.7	6.7X-45.0X	38.5-5.3	20.1X-135.0X	11.9-1.8	26.8X-180.0X	9.0-1.3
25X/9mm	16.8X-112.5X	13.4-2.0	8.4X-56.3X	26.9-4.0	25.1X-168.8X	9.0-1.3	33.5X-225.0X	6.7-1.0
30X/8mm	20.1X-135.0X	11.9-1.8	10.1X-67.5X	23.8-3.6	30.2X-202.5X	7.9-1.2	40.2X-270.0X	6.0-0.9

VT-ZM7045 Series Zoom-Stereo Microscope

VT-ZM7045 Series Zoom-Stereo Microscope can provide crystal clear images with high resolution and good depth within a broad field of view, Once brought in focus, image remains clear and sharp throughout the whole zoom range. It comes with standard super wide-field high- eyepoint WF 10x/20mm Eyepiece, convenient for eyewear operators also. It is widely used in electronic industry, educational demonstration and agricultural research for micro- object observation, inspection and measurement.



VT-ZM7045-B1



VT-ZM7045T-B2

SPECIFICATION

Zoom Range: 0.7x-4.5x
 Zoom Ratio: 1:6.4
 Total Magnification: 7- 45x(Standard), 3.5-270x with optional lens
 Working Distance: 100mm(Standard), 30-287mm with optional lens
 Interpupillary Distance: 54 - 76mm
 Diopter Adjustment: +/- 5 diopters
 Binocular Tube: with an inclination of 45° for greater ease of observation
 Binocular Body: Can be rotated a full 360° and locked in any position desired.
 Trinocular Body:0%/100%,50%/50%,20%/80%, with a vertical phototube

Optical Specification

Eyepiece	Standard		Auxiliary Lens 0.5X		Auxiliary Lens 1.5X		Auxiliary Lens 2X	
	W.D. 100mm		W.D. 165mm		W.D. 45mm		W.D. 30mm	
	Mag.	F.O.V (mm)	Mag.	F.O.V (mm)	Mag.	F.O.V (mm)	Mag.	F.O.V (mm)
10X/22mm	7.0X-45.0X	28.6-4.4	3.5X-22.5X	57.1-8.9	10.5X-67.4X	19.0-3.0	14.0X-90.0X	14.3-2.2
15X/16mm	10.5X-67.5X	21.1-3.3	5.25X-33.75X	42.8-6.7	15.75X-101.25X	14.3-2.2	21.0X-135.0X	10.7-1.7
20X/12mm	14.0X-90.0X	14.3-2.2	7.0X-45.0X	28.6-4.4	21.0X-135.0X	9.5-1.5	28.0X-180.0X	7.1-1.1
25X/9mm	17.5X-112.5X	12.9-2.0	8.85X-56.3X	25.4-4.0	26.2X-168.8X	8.6-1.3	35.0X-225.0X	6.4-1.0
30X/8mm	21.0X-135.0X	11.4-1.8	10.5X-67.5X	22.9-3.6	31.5X-202.5X	7.6-1.2	42.0X-270.0X	5.7-0.9

OPTIONS&ACCESSORIES

Eyepiece:WF10x / WF15x / WF20x / WF25x / WF30x

Stand:A wide variety of stands for option. Refer to P.15-P.16

Illumination:Fluorescent Ring Light, LED Ring Light, Halogen Lamp. Refer to P.21

For Trinocular Body:Phototube, C -Mount for Camera. Refer toP.20

VT-ZM7045A Series Zoom-Stereo Microscope

VT-ZM7045A Series Zoom-Stereo Microscope is a new device with the novel shape. It has the same technical parameters with VT-ZM7045 Series Zoom-Stereo Microscope.



VT-ZM7045A-2L



VT-ZM7045AT-2L

SPECIFICATION

Zoom Range: 0.7x-4.5x

Zoom Ratio: 1:6.4

Total Magnification: 7- 45x(Standard), 3.5-270x with optional lens

Working Distance: 100mm(Standard), 30-287mm with optional lens

Interpupillary Distance: 54 - 76mm

Diopter Adjustment: +/- 5 diopters

Binocular Tube:with an inclination of 45° for greater ease of observation

Binocular Body:Can be rotated a full 360° and locked in any position desired.

Trinocular Body:50%/50%, with a vertical phototube

OPTIONS&ACCESSORIES

Eyeiece:WF10x / WF15x / WF20x / WF25x / WF30x

Stand:A wide variety of stands for option. Refer to P.15-P.16

Illumination:Fluorescent Ring Light, LED Ring Light, Halogen Lamp. Refer to P.21

For Trinocular Body:Phototube, C -Mount for Camera. Refer toP.20

Optical Specification

Eyepiece	Standard		Auxiliary Lens 0.5X		Auxiliary Lens1.5X		Auxiliary Lens2X	
	W.D. 100mm		W.D. 165mm		W.D. 45mm		W.D. 30mm	
	Mag.	F.O.V (mm)	Mag.	F.O.V (mm)	Mag.	F.O.V (mm)	Mag.	F.O.V (mm)
10X/22mm	7.0X-45.0X	28.6-4.4	3.5X-22.5X	57.1-8.9	10.5X-67.4X	19.0-3.0	14.0X-90.0X	14.3-2.2
15X/16mm	10.5X-67.5X	21.1-3.3	5.25X-33.75X	42.8-6.7	15.75X-101.25X	14.3-2.2	21.0X-135.0X	10.7-1.7
20X/12mm	14.0X-90.0X	14.3-2.2	7.0X-45.0X	28.6-4.4	21.0X-135.0X	9.5-1.5	28.0X-180.0X	7.1-1.1
25X/9mm	17.5X-112.5X	12.9-2.0	8.85X-56.3X	25.4-4.0	26.2X-168.8X	8.6-1.3	35.0X-225.0X	6.4-1.0
30X/8mm	21.0X-135.0X	11.4-1.8	10.5X-67.5X	22.9-3.6	31.5X-202.5X	7.6-1.2	42.0X-270.0X	5.7-0.9

VT-ZM8050 Series Zoom-Stereo Microscope

VT-ZM8050 Series Zoom-Stereo Microscope is fully coated optical system with super high resolution. It offers sharp clear images with extremely great flatness and contrast. Once brought in focus, image remains clear and sharp throughout the whole zoom range. It comes with super wide-field high- eyepoint eyepieces. The flat field parfocal zoom objectives provide continuously variable magnification from 4x to 300x depending upon the eyepiece and auxiliary lens used. It' s an ideal instrument for those who require precision-oriented observation.



VT-ZM8050-S7



VT-ZM8050-J4L+1/2xCTV

SPECIFICATION

Zoom Range: 0.8x-50x
 Zoom Ratio: 1:6.3
 Total Magnification: 8- 50x(Standard), 4-300x with optional lens
 Working Distance: 115mm(Standard), 43.5 - 211mm with optional lens
 Interpupillary Distance: 52 - 75mm
 Diopter Adjustment: +/- 5 diopters
 Binocular Tube: with an inclination of 45° for greater ease of observation
 Binocular Body: Can be rotated a full 360° and locked in any position desired.
 Trinocular Body: 50%/50%

OPTIONS&ACCESSORIES

Eyepiece:WF10x / WF15x / WF20x / WF25x / WF30x
 Stand:A wide variety of stands for option. Refer to P.15-P.16
 Illumination:Fluorescent Ring Light, LED Ring Light, Halogen Lamp. Refer to P.21
 For Trinocular Body:1/2x C-Mount for Camera.

Optical Specification

Eyepiece	Standard		Auxiliary Lens 0.5X		Auxiliary Lens 2X	
	W.D. 115mm		W.D. 211mm		W.D. 43.5mm	
	Mag.	F.O.V (mm)	Mag.	F.O.V (mm)	Mag.	F.O.V (mm)
10X/22mm	8.0X-50.0X	27.5-4.4	4.0X-25.0X	55.0-8.8	16.0X-100.0X	13.8-2.2
15X/16mm	12.0X-75.0X	20.0-3.2	6.0X-37.5X	40.0-6.4	24.0X-150.0X	10.0-1.6
20X/12mm	16.0X-100.0X	15.6-2.5	8.0X-50.0X	31.2-5.0	32.0X-200.0X	7.8-1.3
25X/9mm	20.0X-125.0X	11.3-1.8	10.0X-62.5X	22.5-3.6	40.0X-250.0X	5.6-0.9
30X/8mm	24.0X-150.0X	10.0-1.6	12.0X-75.0X	20.0-3.2	48.0X-300.0X	5.0-0.8

VT-2GM30/40 Series Two-gear Stereo Microscope

VT-2GM30/40 Series Two-gear Stereo Microscopes are economical devices. They have a paired fixed objective lens each in a turret mount for your selection of magnification. With their portable design, they are ideal for student to observe the object. With "2L" stand, VT-2GM30/40 Series can provide LED, Incandescent Light, or Halogen illumination.



VT-2GM3024R-2L



VT-2GM4024-2L

SPECIFICATION

Fixed Objective: 1x/2x, 1x/3x and 2x/4x
 Total Magnification: 10x/20x, 10x/30x and 20x/40x with WF 10x Eyepiece
 Working Distance: 56mm(1x), 81mm(2x), 61mm(3x) and 58mm(4x)
 Interpupillary Distance: 55 - 75mm
 Diopter Adjustment: +/- 5 diopters
 Binocular Tube: with an inclination of 45° for greater ease of observation
 ST30 Series Binocular Body: Fixed inclined head in rear or front position
 ST40 Series Binocular Body: Can be rotated a full 360° and locked in any position desired.

OPTIONS & ACCESSORIES

Eyepiece: WF5x/WF10x/WF15x/WF20x
 Stand: 2L with LED, Incandescent Light, or Halogen illumination for option

Optical Specification

Eyepiece	1X Objective Lens		2X Objective Lens		3X Objective Lens		4X Objective Lens	
	W.D. 56mm		W.D. 81mm		W.D. 61mm		W.D. 58mm	
	Mag.	F.O.V (mm)	Mag.	F.O.V (mm)	Mag.	F.O.V (mm)	Mag.	F.O.V (mm)
WF5X	5.0X	18.0	10.0X	9.0	15.0X	6.0	20.0X	14.3
WF10X	10.0X	20.0	20.0X	10.0	30.0X	6.7	40.0X	2.2
WF15X	15.0X	13.0	30.0X	6.5	45.0X	4.3	60.0X	10.7
WF20X	20.0X	10.0	40.0X	5.0	60.0X	3.3	80.0X	1.7

VT-2GM60/60A Series Two-gear Stereo Microscope

VT-2GM60/60A Series Two-gear Stereo Microscopes have a paired fixed objective lens each in a turret mount for your selection of magnification. It's easy to operate, economically for industries and schools.



VT-2GB 6024-B1



VT-2GM6024A-2L

SPECIFICATION

Fixed Objective: 1x/2x,1x/3x and 2x/4x
 Total Magnification: 10x/20x,10x/30x and 20/40x with WF 10x Eyepiece
 Working Distance: 100mm
 Interpupillary Distance: 54-76mm
 Diopter Adjustment: +/- 5 diopters
 Binocular Tube:with an inclination of 45° for greater ease of observation
 Binocular Body:Can be rotated a full 360° and locked in any position desired.

OPTIONS&ACCESSORIES

Eyepiece: WF10x / WF15x / WF20x

Stand:A wide variety of stands for option. Refer to P.15-P.16

Illumination:Fluorescent Ring Light, LED Ring Light, Halogen Lamp. Refer to P.21

Optical Specification

Eyepiece	1X Objective Lens		2X Objective Lens		3X Objective Lens		4X Objective Lens	
	W.D. 100mm							
	Mag.	F.O.V (mm)	Mag.	F.O.V (mm)	Mag.	F.O.V (mm)	Mag.	F.O.V (mm)
10X/20mm	10.0X	20.0	20.0X	10.0	30.0X	7.5	40.0X	5.0
15X/15mm	15.0X	15.0	30.0X	7.5	45.0X	5.0	60.0X	3.3
20X/10mm	20.0X	10.0	40.0X	5.0	60.0X	3.3	80.0X	2.5

VT-2GM70 Series Two-gear Stereo Microscope

VT-2GM70 Series Two-gear Stereo Microscope is a latest high quality device. It's fully coated optical system with super high resolution. It offers sharp clear images with extremely great flatness and contrast. With the new ergonomics design and super large field of view, you can use this microscope for long time without fatigue. It is widely used in electronic industry, educational demonstration and agricultural research for micro- object observation, inspection and measurement.



VT-2GM7024-B1



VT-2GM7024-B8L

SPECIFICATION

Fixed Objective: 1x/2x, 1x/3x and 2x/4x
 Total Magnification: 10x/20x, 10x/30x and 20x/40x with WF 10x Eyepiece
 Working Distance: 110mm
 Interpupillary Distance: 54 - 75mm
 Diopter Adjustment: +/- 5 diopters
 Binocular Tube: With an inclination of 45° for greater ease of observation
 Binocular Body: Can be rotated a full 360° and locked in any position desired.

OPTIONS & ACCESSORIES

Eyepiece: WF10x / WF15x / WF20x / WF25x / WF30x
 Stand: A wide variety of stands for option. Refer to P.15-P.16
 Illumination: Fluorescent Ring Light, LED Ring Light, Halogen Lamp. Refer to P.21

Optical Specification

Eyepiece	1X Objective Lens		2X Objective Lens		3X Objective Lens		4X Objective Lens	
	Mag.	F.O.V (mm)	Mag.	F.O.V (mm)	Mag.	F.O.V (mm)	Mag.	F.O.V (mm)
10X/23mm	10.0X	20.0	20.0X	10.0	30.0X	7.5	40.0X	5.0
15X/16mm	15.0X	16.0	30.0X	8.0	45.0X	5.0	60.0X	3.3
20X/12mm	20.0X	12.0	40.0X	6.0	60.0X	3.3	80.0X	2.5
25X/9mm	25.0X	9.0	50.0X	4.5	75.0X	3.0	100.0X	2.3
30X/8mm	30.0X	8.0	60.0X	4.0	90.0X	2.7	120.0X	2.0

VT-ZM7045 Digital Microscope

VT-ZM7045 Digital Microscope can observe the object in three dimensions within the field of view, providing crystal clear images with high resolution and good depth of view, having long working distance.

It is easy to operate and get the images intuitively, widely used in electronic industry, educational demonstration and agricultural research for micro-object observation, inspection and measurement. You can save, enlarge and print the pictures displayed at the screen. After installing the attached drive, you can get measured data of Straight Lines Measurement, Curve Measurement, Arc Length Measurement, Angular Measurement, and the data can be labeled on the image. Meanwhile, these data can be loaded into Excel or printed out directly.



VT-ZM7045T-B7V.0116

Vision Facilities Optical Specification

Model	VT-ZM7045T-B7V.0116S	VT-ZM7045T-B7V.0116P
Image Sensor	2MP 1/2"	16MP 1/2.33"
Pixel Size	3.75um x 3.75um	1.335um x 1.335um
Image Resolution	1920x1080(16:9)、1440x1080(4:3)	4608x2592(16:9)、4608x3456(4:3)
Video Resolution	4K@25fps (Clear) 、1080P@60fps (Smooth) 、720P@120fps (High speed)	
Display Screen Resolution	1080P @ 60fps	
HDMI Resolution	1080P @ 60fps	
USB Resolution	1080P30、720P30、WVGAP60	
WIFI Output	960x540@30fps, Support Android and iOS (Optional)	
Zoom Rate	1X-16X Infinite magnification	
HDMI Interface	TYPE-A	
USB Interface	TYPE-C USB2.0	
TF Card Slot	Max support 64GTF card	
Lens	Suitable for C mount or CS mount	

LCD Digital Microscope



VT-VMS series (Base optional)

Model	VT-VMS007	VT-VMS005	VT-VMS0043
Screen size	7.0 Inch	5.0 Inch	4.3 Inch
Screen resolution	1024 x 600	800 x 480	480 x 272
Image sensor	1/3 inch (BSI)		
Pixel size	2 μ m x 2 μ m		
Image resolution	2688 x 1512, 5440 x 3056 (Interpolation)		
Video resolution	1080P@30fps (Clear)、720P@60fps (Smooth)		
HDMI resolution	720P@60fps		
USB resolution	1080P@20fps、720P@30fps、WVGA@60fps		
Zoom rate	5X-528X(Optical 5X-33X, Digital 1X-16X)		
Exposure control	AE lock, Exposure compensation (10 level adjustable)		
White balance	Auto, Manual (R、 G、 B 10 level adjustable) 、 Calibration		
Image control	Ten level adjustment of contrast, saturation and sharpness		
Comparison of the PIP	Full screen, left and right, up and down, 1/4		
Grid	8 groups, position, color, thickness adjustable		
Measurement	Point, line, circle, angle (Optional)		
Language	Simplified Chinese, Traditional Chinese, English		
White LED	Touch type stepless adjustment		
Mouse interface	USB-A, recommend to use the original mouse (optional)		
IR Remote	Max 5 meters		
HDMI interface	C TYPE (Mini HDMI)		
USB interface	TYPE-C USB2.0		
TF card slot	Max support 64 G TF card		
Working distance	1cm~5m		
Device size	174mm (L) x 129mm (W) x 51mm (H)		
Device weight	320 (With battery) / 270g (Without battery)		



CONTRASTTECH

VT-BM Series Biological Microscope

VT-BM Series Monocular Biological Microscope is ideal for many applications in the laboratory, teaching and production. It has 45 degree inclined viewing and 360 degree rotating optical head. The sturdy metal tripod ensures high stability and the option to choose between coarse and fine adjustment facilitates precise working.



VT-BM100FL

Optical Specification

Objective lens	4X	10X	40X	100X (Optional)
WF10X/18mm (Standard)	Magnification	Magnification	Magnification	Magnification
	40X	100X	400X	1000X
Eyepiece	WF 10X/18mm, WF16X/14mm, WF20x/10mm for Option; Can come with Pointer or Calibration Slide			
Monocular Body	45 Degree Inclined, 360 Degree Rotating Optical Head with 160mm Eyepiece Tube			
Objective Nosepiece	WF10X/18mm,WF16X/14mm,WF20X/10mm,Can bring pointer or micrometer			
Objective Lens	Triple or Quadruple			
Focus Arm	Achromatic 4X,10X,40X and 100X			
Mechanical Stage	120x110mm Metal stage with Paired Clips; Can Install with Attachable Measuring Mechanical			
Condenser	N.A.0.65 Fixed Condenser and Disc Diaphragm			
	N.A.1.25 Focusable ABBE Condenser and Iris Diaphragm			
Power Supply	230v(115v Optional)			
Illumination	20W Tungsten Illumination, LED Illumination.Providing ϕ 42mm Drop-in plano-concave Double Faced Reflector			

VT-BM Series Biological Microscope

VT-BM2018 Series compact design Biological Microscope with curved mirror arm, committed to satisfying the different fields need of study, basic medical care and scientific research. The hollow design is used to reduce weight while being ergonomic and enabling one-handed movement.



VT-BM2018 / VT-BM2018T

Optical Specification

Objective lens	4X	10X	40X	100X
WF10X/18mm (Standard)	Magnification 40X	Magnification 100X	Magnification 400X	Magnification 1000X
Optional Eyepiece	Wide field plan eyepiece PL10X/18mm, PL10X/18mm with pointer, PL10X/18mm with micrometer.			
Optional lens	Plan achromatic (4X, 10X, 40X, 100X)			
Monocular Body	30° tilt, Hinged binocular observation head, Pupil distance adjustment: 50mm-75mm, Unilateral diopter adjustment			
	30° tilt, Hinged trinocular observation head, Interpupillary distance adjustment: 50mm-75mm, Unilateral diopter adjustment, Fixed split ratio R:T:80:20			
Converter	Internal positioning four-hole converter			
Adjustment	Low-hand position coarse and fine coaxial, coarse adjustment stroke 25mm, fine adjustment accuracy 0.002mm, with adjustment to prevent sliding joint elastic device and mechanical upper limit device			
Mechanical Stage	Double-layer composite mechanical mobile platform (Two specifications are available: 142mmx132mm square, 155mmx142mm arc-shaped) Moving range: 76mmX50mm; accuracy 0.1mm			
Condenser	Abbe condenser, numerical aperture N.A.1.25, with variable aperture diaphragm			
Illumination	3W LED lighting, continuously adjustable brightness; external wide voltage adapter, input AC100V-240V, 50/60Hz, output DC12V2A			
Other	Optional: adjustable focus C-type CTV interface: 0.35X, 0.5X, 1X,			

Monocular Zoom-Stereo Video Microscope

VT-MZM45 Series Monocular Zoom-Stereo Video Microscope adopt the advanced multi-layer coating technology. It offers sharp clear images, designed for using with a CCD camera. It is widely used in electronic industry, educational demonstration and agricultural research for micro- object observation, inspection and measurement. 63- 180lp/mm resolution meeting the requirements of conventional imaging machine vision.



VT-MZM45-STL7V



VT-MZM45-B3



VT-MZM45B-B3

SPECIFICATION

Zoom Range: 0.7x-4.5x

Zoom Ratio: 1:6.4

Working Distance: 100mm(Standard), 46-198mm with optional lens

OPTIONS&ACCESSORIES

Eyepiece:0.35x,0.5x and 1x

Auxiliary Lens:0.5x and 2x

Stand:A wide variety of stands for option. Refer to P.15-P.16

Illumination:Fluorescent Ring Light, LED Ring Light, Halogen Lamp. Refer to P.21

Can be connected to the CCD camera and LCD.

Optical Specification

Eyepiece	Standard		Auxiliary Lens 0.5X		Auxiliary Lens 2X	
	W.D. 100mm		W.D. 198mm		W.D. 46mm	
	Mag.	F.O.V (mm)	Mag.	F.O.V (mm)	Mag.	F.O.V (mm)
0.35X	0.245X	23.0	0.1225X	46.0	0.49X	11.6
	1.575X	3.0	0.7875X	7.0	3.15X	1.7
0.5X	0.35X	17.6	0.175X	35.0	0.7X	8.8
	2.25X	2.7	1.125X	5.0	4.5X	1.3
1X	0.7X	9.0	0.35X	17.6	1.4X	4.0
	4.5X	1.6	2.25X	3.0	9.0X	0.71

Microscope Head



VT-ZM7045H
7-45X Binocular Zoom-Stereo



VT-ZM7045TRH
Splitting Ratio:0:1,5:5,2:8
7-45X Trinocular Zoom-Stereo



VT-ZM7045V Digital
7-45X Zoom-Stereo



VT-ZM7045AH
7-45X Binocular Zoom-Stereo



VT-ZM7045ATRH
Splitting Ratio:5:5,2:8
7-45X Trinocular Zoom-Stereo



VT-ZM6745H
6.7-45X Binocular Zoom-Stereo



VT-ZM6745TRH
6.7-45X
Trinocular Zoom-Stereo



VT-ZML6745H
45° or 60°
inclined viewing
6.7-45X Binocular
Zoom-Stereo



VT-ZML6745TRH
45° or 60°
inclined viewing
6.7-45X Tinocular
Zoom-Stereo



VT-ZML6745TRH
45° or 60°
inclined viewing
6.7-45X Tinocular
Zoom-Stereo

Microscope Head



VT-2GM6024H
20/40X Fixed Objective



VT-2GM6024AH
20/40X Fixed Objective



VT-2GM7024H
20/40X Fixed Objective



VT-ZM8050H
8-50X Binocular
Zoom-Stereo



VT-ZM8050TRH
8-50X Trinocular
Zoom-Stereo



VT-ZM7045ATRH(NEW)
Splitting Ratio:5:5,2:8
7-45X Trinocular
Zoom-Stereo



VT-ZM7045TRH(NEW)
Splitting Ratio:0:1,5:5,2:8
7-45X Trinocular
Zoom-Stereo



VT-ZM6745TRH(NEW)
6.7-45X Trinocular
Zoom-Stereo



VT-MZM45
0.7-4.5X Zoom



VT-MZM45B
0.7-4.5X Zoom

Microscope Stand



B1 Pole Stand

Vertical Post:240mm
 Dia.:32mm
 Base Size:200x255x22mm,
 with Φ 95mm B/W Plastic
 Plate and Paired Clips Using
 With A1 Focusing Mount



B9L Track Stand

Vertical Height:300mm
 Focusing Distance: 106mm
 Mounting Dia: Φ 76mm
 Input Power:110v-240v
 Top and Bottom LED Illumination
 with an independent control
 Base Size:205x275x40mm, with
 Φ 95mm B/W Plastic & Perspex
 Plate and Paired Clips



B2 Pole Stand

Vertical Post:240mm Dia.32mm
 Top Halogen:12v/15w
 Bottom Halogen:12v/15w/
 Fluorescent:7w
 Top and Bottom LED Illumination
 with an independent control
 Using with A1 Focusing Mount
 Base Size:200x255x60mm,
 with Φ 95mm B/W Plastic
 Plate and Glass Plate and
 Paired Clips



J3L Track Stand

Vertical Height:300mm
 Focusing Distance: 106mm
 Mounting Dia: Φ 76mm
 Input Power:110v-240v
 Top and Bottom LED Illumination
 with an independent control
 Base Size:285x238x40mm,
 with Φ 95mm B/W Plastic & ,
 Perspex Plate and Paired Clips



B3 Pole Stand

Vertical Post:240mm
 Dia.:32mm
 Base Size:380x260x20mm
 Using with A1 Focusing Mount



J4L Pole Stand

Vertical Post:240mm
 Dia.:32mm
 Input Power:110v-240v
 Top and Bottom LED Illumination
 with an independent control
 Base Size:285x238x40mm,
 with Φ 95mm B/W Plastic &
 Perspex Plate and Paired Clips
 Using with A1 Focusing Mount



B8L Pole Stand

Vertical Post:240mm
 Dia.:32mm
 Input Power:110v-240v
 Top and Bottom LED Illumination
 with an independent control
 Base Size:200x275x40mm,
 with Φ 95mm B/W Plastic &
 Perspex Plate and Paired Clips
 Using with A1 Focusing Mount

Microscope Stand



STL1 Boom Stand
 Vertical Post: 380mm
 Dia.: 32mm
 Horizontal Moving: 235mm
 Base Size: 230x230x40mm
 Using with A1 Focusing Mount
 This stand can expand the operation scope



STL6-B Articulating Arm Stand with C-clamp
 Vertical Height: 400mm
 Horizontal Moving: 770mm
 Vertical Post: 275mm
 Dia.: 25mm
 Clamp Size: 98x80x116mm
 Max Clamping Size: 50mm
 Using with A3 Focusing Mount
 This stand can expand the operation scope and view the object at any direction



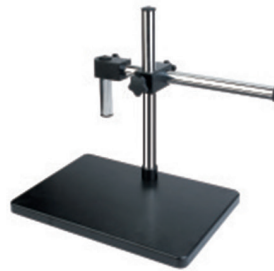
STL2 Boom Stand
 Vertical Post: 380mm
 Dia.: 32mm
 Horizontal Moving: 235mm
 Base Size: 210x260x50mm
 Using with A1 Focusing Mount
 This stand can expand the operation scope and view the object at any direction



STL6-C Articulating Arm Stand
 Vertical Height: 400mm
 Horizontal Moving: 770mm
 Vertical Post: 323mm
 Dia.: 25mm
 Base Size: 260x280x15mm
 Using with A3 Focusing Mount
 This stand can expand the operation scope and view the object at any direction



STL 5 Boom Stand
 Vertical Post: 380mm
 Dia.: 37 mm
 Horizontal Moving: 420mm
 Base Size: 260x280x15mm
 Using with A3 Focusing Mount
 This stand can expand the operation scope



STL7 Pole Stand
 Vertical Post: 340mm
 Dia.: 25mm
 Horizontal Moving: 315mm
 Base Size: 380x260x20mm
 Using with XLB-A1 Focusing Mount
 This stand can expand the operation scope



STL6-A Articulating Arm Stand with C-clamp
 Vertical Height: 400mm
 Horizontal Moving: 770mm
 Clamp Size: 98x80x116mm
 Max Clamping Size: 50mm
 Using with A3 Focusing Mount
 This stand can expand the operation scope and view the object at any direction



STL8 Pole Stand
 Vertical Post: 355mm
 Dia.: 32mm
 Horizontal Moving: 265mm
 Base Size: 380x280x10mm
 Using with A3 Focusing Mount
 This stand can expand the operation scope

Microscope Holder



A1 Focusing Mount
 ID.32mm for Pole
 ID.76mm for Microscope Body
 Dist. Centre-to- centre: 155mm
 The Vertical W.D.:50mm



A5 Focusing Mount
 ID.76mm for Microscope Body
 The Vertical W.D.:47mm



A2 Focusing Mount
 ID.24.5mm for Pole
 ID.76mm for Microscope Body
 The Vertical W.D.: 50mm



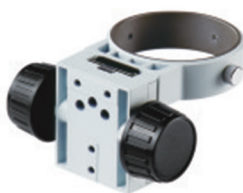
A6 Coarse & Fine Focusing Mount
 ID.32mm for Pole
 ID.76mm for Microscope Body
 Dist. Centre-to-centre:155mm
 The Vertical W. D.:45mm
 The Precision:0.002mm



A3 Focusing Mount
 Mounting Dia.:16mm
 ID.76mm for Microscope Body.
 The Vertical W. D.:50mm



VT-MZM45-A1 Focusing Mount
 ID.25mm for Pole
 ID.50mm for Microscope Body
 Dist. Centre-to-centre:140mm
 The Vertical W. D.:42mm



A4 Focusing Mount
 ID.76mm for Microscope Body
 The Vertical W. D.:45mm



VT-MZM45B-A1 Focusing Mount
 ID.25mm for Pole
 ID.50mm for Microscope Body
 Dist. Centre -to- centre:140mm
 The Vertical W. D.:62mm

Eyepiece



VT-ZM7045/2GM60 Series
WF 10X/20mm



VT-ZM7045/2GM60 Series
WF 15X/15mm



VT-ZM7045/2GM60 Series
WF 20X/10mm



VT-ZM7045/2GM60 Series
WF 25X/9mm



VT-ZM7045A Series
WF 10X/20mm



VT-ZM6745 Series
WF 10X/22mm



VT-ZM6745 Series
WF 15X/16mm



VT-ZM6745 Series
WF 20X/12mm



VT-ZM6745 Series
WF 25X/9mm



VT-ZM6745 Series
WF 30X/8mm



VT-2GM30/40 Series
WF 10X/20mm



VT-2GM30/40 Series
WF 20X/10mm



VT-BM Series
WF 10X/18mm



VT-2GM70 Series
WF 10X/23mm



VT-2GM70 Series
WF 20X/12mm



VT-ZM8050 Series
WF 10X/22mm

Microscope Objective



VT-ZM7045 Auxiliary Lens
0.5X/165mm



VT-ZM7045 Auxiliary Lens
1.5X/45mm



VT-ZM7045 Auxiliary Lens
2X/30mm



VT-ZM6745 Auxiliary Lens
0.3X/287mm



VT-ZM6745 Auxiliary Lens
0.5X/177mm



VT-ZM6745 Auxiliary Lens
0.7X/113mm



VT-ZM6745 Auxiliary Lens
0.75X/116mm



VT-ZM6745 Auxiliary Lens
1.5X/47mm



VT-ZM6745 Auxiliary Lens
2X/26mm



VT-ZM8050 Auxiliary Lens
0.5X/220mm



VT-ZM8050 Auxiliary Lens
2X/45mm



VT-MZM(10A) Auxiliary Lens
0.5X/165mm



VT-MZM(10A) Auxiliary Lens
2X/30mm



VT-MZMB Auxiliary Lens
0.5X



VT-MZMB Auxiliary Lens
0.75X



VT-MZMB Auxiliary Lens
1.0X

Video Adapter



Phototube for VT-ZM7045
 Eyepeice Port Dia.:23.2
 Trinocular Port:M28x0.75



VT-ZM7045 1xCTV
 CCD Port:1" x1/32"
 Trinocular Port:M28x0.75



VT-ZM7045 1/2xCTV
 CCD Port:1" x1/32"
 Trinocular Port:M28x0.75



VT-ZM7045 1/3xCTV
 CCD Port:1" x1/32"
 Trinocular Port:M28x0.75



Phototube for VT-ZM6745
 Eyepeice Port Dia.:23.2
 Trinocular Port:M28x0.75



VT-ZM6745 1xCTV
 CCD Port:1" x1/32"
 Trinocular Port:M28x0.75



VT-ZM6745 1/2xCTV
 CCD Port:1" x1/32"
 Trinocular Port:M28x0.75



VT-ZM7045AT
 CCD Port:1" x1/32"
 Trinocular Port Dia.:38



Phototube for VT-ZM7045AT(NEW)
Phototube for VT-ZM7045NT(NEW)
 Eyepeice Port Dia.:23.2
 Trinocular Port Dia.:38



VT-ZM7045AT 1xCTV(NEW)
VT-ZM7045NT 1xCTV(NEW)
 CCD Port:1" x1/32"
 Trinocular Port Dia.:38



VT-ZM7045AT 1/2xCTV(NEW)
VT-ZM7045NT 1/2xCTV(NEW)
 CCD Port:1" x1/32"
 Trinocular Port Dia.:38



VT-ZM045AT 1/3xCTV(NEW)
VT-ZM045NT 1/3xCTV(NEW)
 CCD Port:1" x1/32"
 Trinocular Port Dia.:38

Noted: CTV with (NEW), used for the lens with (NEW)

External Illuminator & Accessories



56-LED Ring Light

ID:Φ61mm
Color Temperature: 6000-7000K
Output Power:2W
100-240V, DC12V



Rotatable 56-LED Ring Light

ID:Φ58mm or Φ61mm
Color Temperature: 6000-7000K
Output Power:2W
100-240V, DC12V



60-LED Ring Light

ID:Φ62mm
Color Temperature:6400K
Output Power:24V/6W
90-240V



64-LED Ring Light

ID:Φ61mm
Color Temperature: 6000-7000K
Output Power:2.2W
100-240V, DC12V



108-LED Ring Light

ID:Φ61mm
Color Temperature:6400K
Output Power:2.16W
100-240V, DC12V



144-LED Ring Light

ID:Φ61mm
Color Temperature: 6000-7000K
Output Power:4.2W
100-240V, DC12V



Fluorescent Ring Light

ID:Φ61mm
Color Temperature:6400K
Output Power:8W
230V



40-LED Ring Light

ID:Φ47mm
Color Temperature:6400K
220V, DC12V

External Illuminator & Accessories



Fiber LED Lights Source

Model: CO-20W
 Light guide outlet diameter : 8mm
 Color Temperature: 6500-7500K
 Output Power: 10W
 Input Voltage: DC24V



Single Optical Fiber Schematic Diagram



Hard Double Optical Fiber Schematic Diagram



Polarising Attachment



X-Y Mechanical Stage (Round Glass)



X-Y Mechanical Stage (Square Glass)



Gem Clips



Dark Field Condenser



Clibration Slide



Clibration Slide for Eyepiece



Micrometer



Hangzhou Contrastech Co.,Ltd.
Add.: No.08 Xiyuan 9th Road Hangzhou China
Tel: 86-571-89712238
E-mail: market@contrastech.com
Web: www.contrastech.com

