



CONTRAS**T**TECH

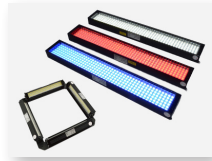
ContrasTech

Light Controller

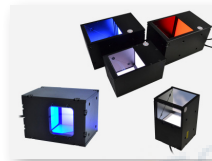
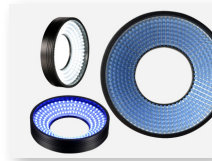


| Model | Drive Mode | Input Voltage | Output Voltage | Power | Output Current | Channel | Output Port | Adapt to line light |
|--|------------------|--------------------------------------|----------------|---|--------------------------------------|---------|-------------|---------------------|
| Digital Controller | | | | | | | | |
| VT-LT4-0506PWDC-2 | Constant Current | 88V-264V | 5V | Total:6W/Single :3W Expandable: Total:12W/Single:6W | / | 2 | SMP-03V | |
| VT-LT4-2420PWDC-2 | Constant Voltage | 88V-264V | 24V | Total:20W Single:20W | / | 2 | SMP-03V | |
| VT-LT4-2460PWDC-4 | Constant Voltage | 88V-264V | 24V | Total:60W Single:25W | / | 4 | SMP-03V | |
| VT-LT4-24150PWDC-4 | Constant Voltage | 88V-264V | 24V | Total:150W Single:70W | / | 4 | SMP-03V | |
| VT-LT3-24240PWDC-2 | Constant Current | 100V-120V(Ver.A) 200V-240V(Ver.B) | 24V | 240W | Total:10A Single:10A | 2 | 19M-5 | √ |
| VT-LT3-24500PWDC-2 | Constant Voltage | 100V-240V | 24V | 480W | Total:20A Single:light 9A, fan 1A | 2 | 19M-2E | |
| VT-LT4-48300PWDC-1 | Constant Current | 90V-264V | 48V | 300W | 0-6A | 1 | - | |
| Stroboscopic Controller (With Brightening Module) | | | | | | | | |
| VT-LT3-PLU24120-4 | Constant Voltage | 100V-240V | 48V | 120W | 10A (Instantaneous Value) | 4 | SMP-03V-BC | |
| VT-LT3-PLU24200-2 | Constant Voltage | 100V-240V | 48V | 200W | 50A (Instantaneous Value) | 2 | 12M-2 | |
| VT-LT3-PLU24200-4 | Constant Voltage | 100V-240V | 48V | 200W | 25A (Instantaneous Value) | 4 | SMP-03V-BC | |
| Line Source Stroboscopic Controller (With Brightening Module) | | | | | | | | |
| VT-LT3-PLU481000LI-6 | Constant Voltage | 100V-240V | 48V | 1000W | Total:25A Single:25A | 6 | 16M-2 | √ |
| line Source Controller | | | | | | | | |
| VT-LT3-24300PWLI-1 | Constant Voltage | 100V-240V | 24V | ≤ 300W | 12.5A | 1 | AM20K4Z | √ |
| VT-LT3-48600PWLI-2 | Constant Current | 100V-120V(Ver.A) 200V-240V(Ver.B) | 48V | 600W | Total:12A Single:6A | 2 | 19M-6 | √ |
| VT-LT3-48300PWLIN-2 | Constant Current | 100V-240V | 48V | ≤ 300W | Total:6A Single:6A | 2 | 16M-6 | √ |
| VT-LT3-48600PWLIN-1 | Constant Current | 100V-120V(Ver.A) 180V-240V(Ver.B) | 48V | ≤ 600W | Total:12A Single:6A | 1 | 19M-6 | √ |
| VT-LT3-48600PWLIN-2 | Constant Current | 180V-240V | 48V | ≤ 600W | Total:12A Single:6A | 2 | 19M-6 | √ |
| VT-LT3-48800PWLIN-1 | Constant Current | 100-240V | 48V | < 800W | 14A | 1 | 19M-6 | √ |
| VT-LT3-48800PWLIN-2 | Constant Current | 100-240V | 48V | Total: ≤ 800W Single: ≤ 400W | 14A | 2 | 19M-6 | √ |
| VT-LT3-481200PWLIN-1 | Constant Current | 100V-240V | 48V | ≤ 1200W | Total:24A Single:12A | 1 | 19M-6 | √ |
| Analog Controller | | | | | | | | |
| VT-LT4-0506PWAC-2 | Constant Current | 88-264 | 5V | Total:6W Single:3W | / | 2 | SMP-03V | |
| VT-LT3-2460PWAC-4 | Constant Voltage | 100-240 | 24V | 60W | Total:2.5A Single:2.5A | 4 | SMP-03V-BC | |

PS: *Default -Ver.B version voltage



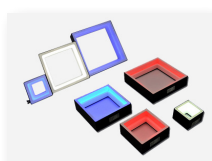
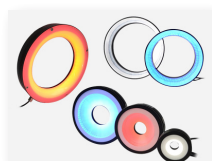
Line illumination
Li/ LiN+ /LiC /MLi Series
 Bar illumination
HL/HL+ /HLDM Series



Ring illumination
HR /HR+ /LR Series
 Coaxial illumination
C/CP/CX Series



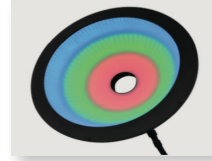
Bottom Flat Backlights illumination
BF/BFP Series
 Side Flat Backlights illumination
BFC/BFCP/BFCK Series



Shadowless Ring illumination
WR/LWR/GWR Series
 Shadowless Square illumination
MT Series



Dome illumination
DM Series
 Tunnel shadowless illumination
T Series



Spot illumination
PI Series
 Three-color illumination
AOI Series



Spot illumination
PI Series
 Fiber LED Lights Source Unit
CO Series



Telecentric illumination
CLW-LIT Series
 UV/IR/Waterproof/Corrosion
 Resistant illumination

More OEM/ODM Led illumination available, and please contact your sales engineer for projects confirmation.

Vision And More Available

让工业更智能，让视觉更简单！



SWIR Camera
Industrial Camera



Macro Lens
Industrial Lens



Microscope



System Solution
No-programming Software



CONTRASTTECH

ADD: No 8, Xiyuan 9th Road Hangzhou 310030 China

TEL: 86-571-89712238

Email: market@contrasttech.com

Web: www.contrasttech.com



Ver.23.02