

Contrasttech

LEO Series Board-level Area Scan Camera

- Excellent Cost Performance
- USB3.0 / GigE Interface
- Compact Design
- Advanced I/O Control

USB[™]
VISION

GigE[®]
VISION

GEN<i>i>CAM

LEO Series

Contrasttech LEO Series

Board-level Area Scan Camera

For more info, pls visit:
www.contrasttech.com

Brief Introduction

With more than a decade of hard work and experience in the field of industrial camera and components, Contrasttech has developed a variety of professional products for different applications and market demands.

LEO series industrial camera is equipped with the latest generation of sensors from Sony and Onsemi. Each camera has undergone strict tests of stability, consistency and robustness to ensure a more stable long-term uninterrupted working state. Its diverse data transmission interfaces and wide range of optional resolutions help customers to find specific products for their applications.

LEO series board-level industrial camera conforms GenICam™, GigE Vision® and USB3 Vision® protocol, can smoothly connected to HALCON, Vision Pro and other third-party software without the secondary development. LEO series board-level industrial cameras with excellent cost performance and ideal for various inspections, measurements and high-speed imaging applications. The board-level industrial camera has been praised by customers for its outstanding performance in airborne, vehicle-mounted and embedded vision applications.

Applications

- Autopilot
- Drones
- Deep Learning
- Space-limited Logistics
- Space-limited industrial Testing



Contrastech LEO Series

Board-level Area Scan Camera

For more info, pls visit:
www.contrastech.com

Main Features

Compact Design

Single board compact design, ideal for embedded applications.

High Quality Sensor

Latest Sony and Onsemi series sensors.

GigE Interface

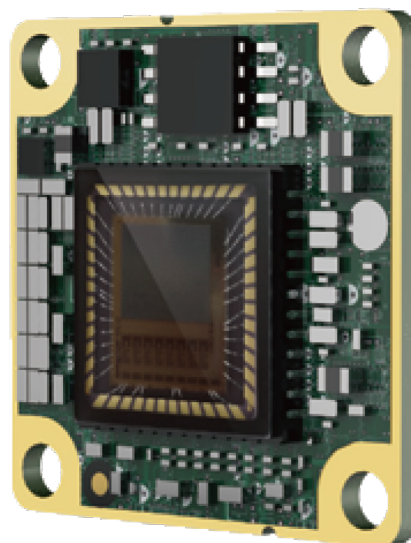
Max. transmission distance of 100 meters without relay

Professional SDK tailor-made software development kit

Supports Windows, Linux, Arm and Raspberry Pi.

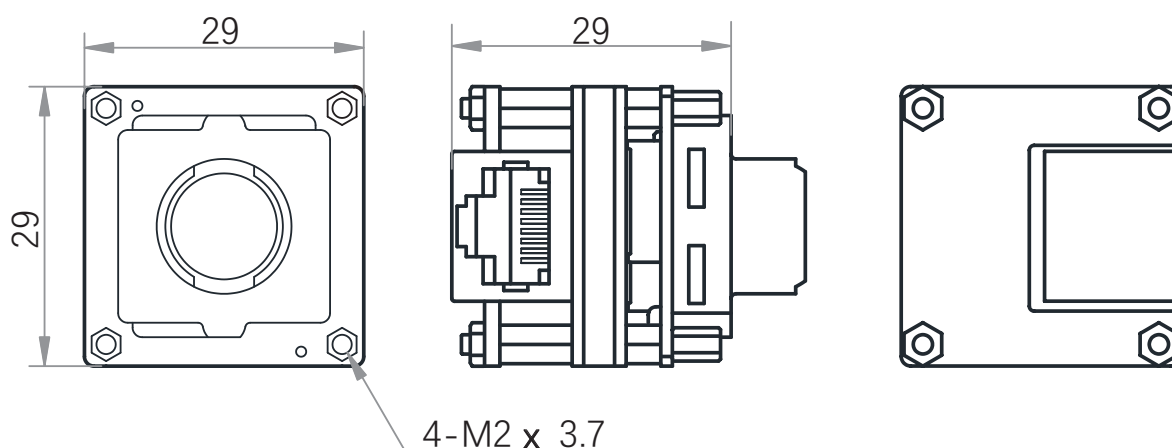
High Cost Performance

Excellent cost control.



LEO Series Board-level Industrial Camera

Model	Resolution	Frame Rate	Data Bits	Sensor Size	Pixel Size	Sensor	Sensor Technology	Color	Power Consumption
LEO 1440S-65gm-BL	1440 × 1080	65.2	8/10/12	1/2.9"	3.45	IMX296	Global Shutter	Mono	12V@2.6W
LEO 6000S-30gm-BL	3072 × 2048	30.7	8/10/12	1/1.8"	2.4	IMX178	Rolling Shutter	Mono	12V@2.3W



Contrastech LEO Series

Board-level Area Scan Camera

For more info, pls visit:
www.contrastech.com

Main Features

Compact Design

Single board compact design, ideal for embedded applications.

High Quality Sensor

Latest Sony and Onsemi series sensors.

High Frame Rate

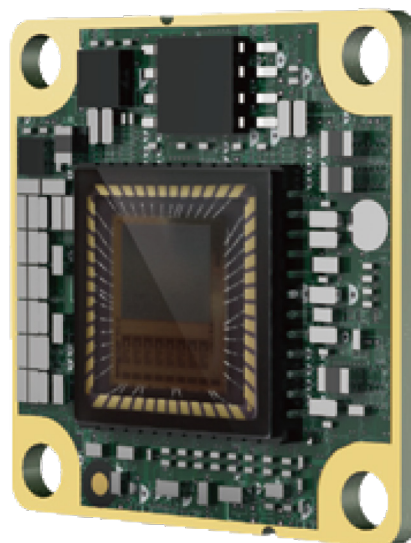
The high speed USB3.0 data transmission bus is suitable for high frame rate applications.

Professional SDK tailor-made software development kit

Supports Windows, Linux, Arm and Raspberry Pi.

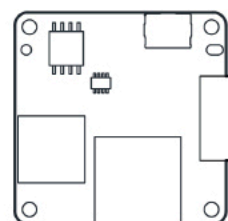
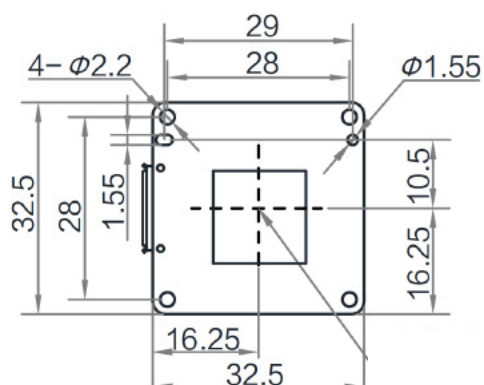
High Cost Performance

Excellent cost control.



LEO Series Board-level Industrial Camera

Model	Resolution	Frame Rate	Data Bits	Sensor Size	Pixel Size	Sensor	Sensor Technology	Color	Power Consumption
LEO 1300-170um-BL	1280 × 1024	170	8/10/12	1/2"	4.8	Python 1300	Global Shutter	Mono	5V@2.27W
LEO 1300-170uc-BL	1280 × 1024	170	8/10/12	1/2"	4.8	Python 1300	Global Shutter	Color	5V@2.27W
LEO 6000-17um-BL	3072 × 2048	17	8/10/12	1/1.8"	2.4	IMX 178	Rolling Shutter	Mono	5V@1.46W
LEO 6000-29uc-BL	3072 × 2048	29	8/10/12	1/1.8"	2.4	IMX 178	Rolling Shutter	Color	5V@1.46W
LEO 4020-28um-BL	4032 × 3036	28	8/10/12	1/1.7"	1.85	IMX 226	Rolling Shutter	Mono	5V@2.42W
LEO 4020-21uc-BL	4032 × 3036	21	8/10/12	1/1.7"	1.85	IMX 226	Rolling Shutter	Color	5V@2.42W



Unit: mm

Contrastech LEO Series

Board-level Area Scan Camera

For more info, pls visit:
www.contrastech.com

Main Features

Compact Design

Compatible S-mount(M12) Lens, with compact design.

High Quality Sensor

Latest Sony and Onsemi series sensors.

High Frame Rate

The high speed USB3.0 data transmission bus is suitable for high frame rate applications.

Professional SDK tailor-made software development kit

Supports Windows, Linux, Arm and Raspberry Pi.

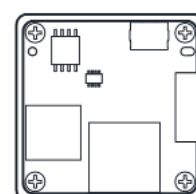
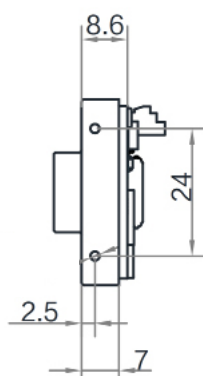
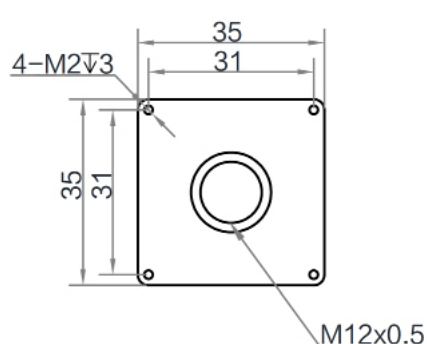
High Cost Performance

Excellent cost control.



LEO Series Board-level Industrial Camera

Model	Resolution	Frame Rate	Data Bits	Sensor Size	Pixel Size	Sensor	Sensor Technology	Color	Power Consumption
LEO 1300-170um-BS	1280 × 1024	170	8/10/12	1/2"	4.8	Python 1300	Global Shutter	Mono	5V@2.27W
LEO 1300-170uc-BS	1280 × 1024	170	8/10/12	1/2"	4.8	Python 1300	Global Shutter	Color	5V@2.27W
LEO 6000-17um-BS	3072 × 2048	17	8/10/12	1/1.8"	2.4	IMX 178	Rolling Shutter	Mono	5V@1.46W
LEO 6000-29uc-BS	3072 × 2048	29	8/10/12	1/1.8"	2.4	IMX 178	Rolling Shutter	Color	5V@1.46W
LEO 4020-28um-BS	4032 × 3036	28	8/10/12	1/1.7"	1.85	IMX 226	Rolling Shutter	Mono	5V@2.42W
LEO 4020-21uc-BS	4032 × 3036	21	8/10/12	1/1.7"	1.85	IMX 226	Rolling Shutter	Color	5V@2.42W



Unit: mm

Contrastech LEO Series

Board-level Area Scan Camera

For more info, pls visit:
www.contrastech.com

Main Features

Compact Design

Compatible C-mount Lens, with compact design.

High Quality Sensor

Latest Sony and Onsemi series sensors.

GigE Interface

Max. transmission distance of 100 meters without relay

Professional SDK tailor-made software development kit

Supports Windows, Linux, Arm and Raspberry Pi.

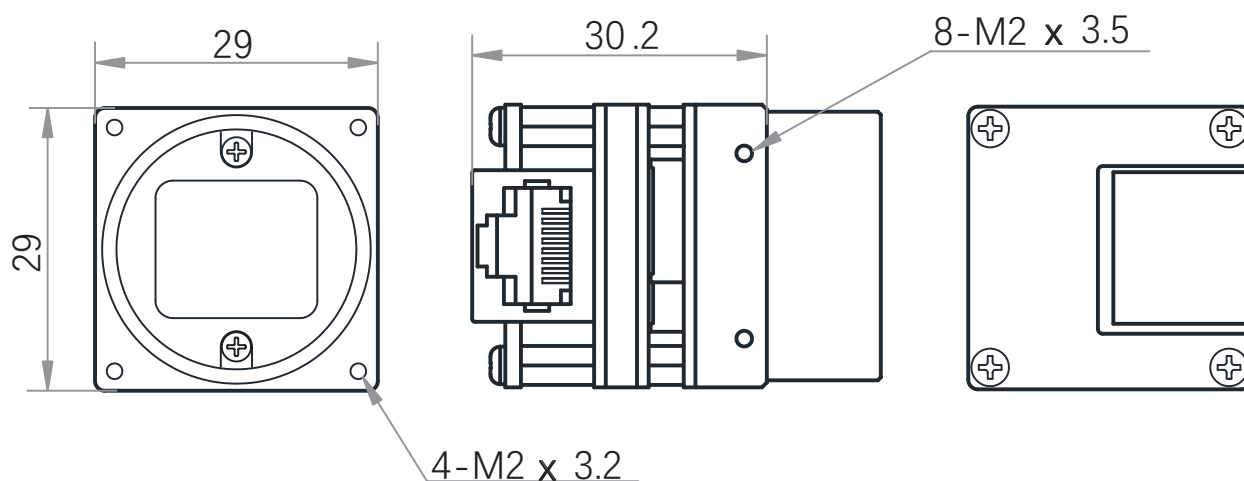
High Cost Performance

Excellent cost control.



LEO Series Board-level Industrial Camera

Model	Resolution	Frame Rate	Data Bits	Sensor Size	Pixel Size	Sensor	Sensor Technology	Color	Power Consumption
LEO 6000S-30gm-BC	3072 × 2048	30.7	8/10/12	1/1.8"	2.4	IMX178	Rolling Shutter	Mono	12V@2.3W



Contrastech LEO Series

Board-level Area Scan Camera

For more info, pls visit:
www.contrastech.com

Main Features

Compact Design

Compatible S-mount(M12) Lens, with compact design.

High Quality Sensor

Latest Sony and Onsemi series sensors.

High Frame Rate

The high speed USB3.0 data transmission bus is suitable for high frame rate applications.

Professional SDK tailor-made software development kit

Supports Windows, Linux, Arm and Raspberry Pi.

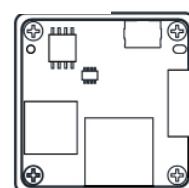
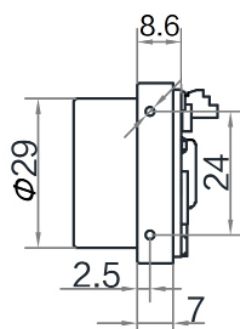
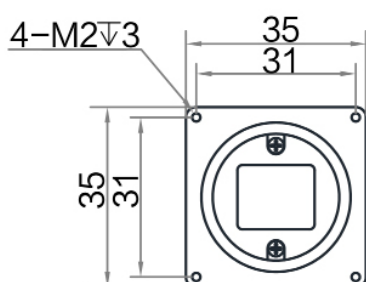
High Cost Performance

Excellent cost control.



LEO Series Board-level Industrial Camera

Model	Resolution	Frame Rate	Data Bits	Sensor Size	Pixel Size	Sensor	Sensor Technology	Color	Power Consumption
LEO 1300-170um-BC	1280 × 1024	170	8/10/12	1/2"	4.8	Python 1300	Global Shutter	Mono	5V@2.27W
LEO 1300-170uc-BC	1280 × 1024	170	8/10/12	1/2"	4.8	Python 1300	Global Shutter	Color	5V@2.27W
LEO 6000-17um-BC	3072 × 2048	17	8/10/12	1/1.8"	2.4	IMX 178	Rolling Shutter	Mono	5V@1.46W
LEO 6000-29uc-BC	3072 × 2048	29	8/10/12	1/1.8"	2.4	IMX 178	Rolling Shutter	Color	5V@1.46W
LEO 4020-28um-BC	4032 × 3036	28	8/10/12	1/1.7"	1.85	IMX 226	Rolling Shutter	Mono	5V@2.42W
LEO 4020-21uc-BC	4032 × 3036	21	8/10/12	1/1.7"	1.85	IMX 226	Rolling Shutter	Color	5V@2.42W



Unit: mm

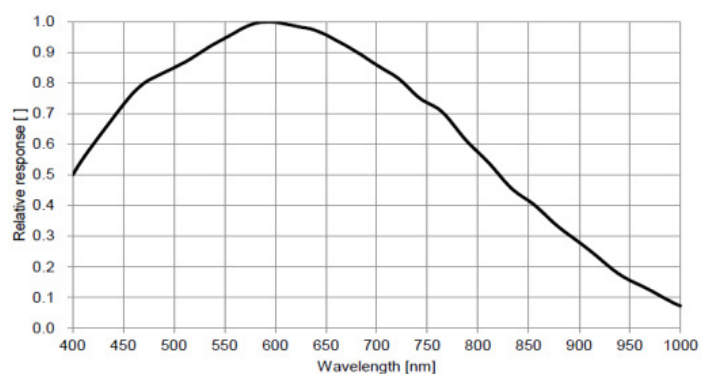
Contrastech LEO Series

Board-level Area Scan Camera

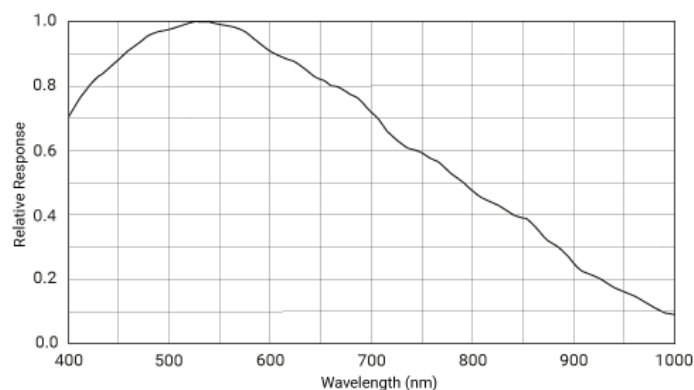
For more info, pls visit:
www.contrastech.com

Specifications

Model	LEO 1440S-65gm-BL	LEO 6000S-30gm-BL/BC
Exposure Time	15 μ s~10s	25 μ s~2.5s
Image Format	Mono8/10/10p/12/12p	
Dynamic Range	74dB	>71dB
Synchronization	Via hardware trigger, via software trigger or free run	
Programmable Control [ISP]	Image Resolution, Exposure Time, Contrast, Gamma Chart, Image Rollover, Raw, LUT	
Temperature	-30~70 ° C (Storage), 0~50° C (Working)	
I/O Control	Opto-isolated input x 1, opto-isolated output x 1, and bi-directional custom non-isolated I/O x 1	
Power Input	DC 9-24V	
Driver	LEO Series Camera Software Suite (iDatum) or 3rd party GigE Vision Software	
Operating System	Windows, Linux, Arm	
Confirmity	GigE Vision, GenICam	



LEO 1440S-65gm-BL



LEO 6000S-30gm-BL/BC

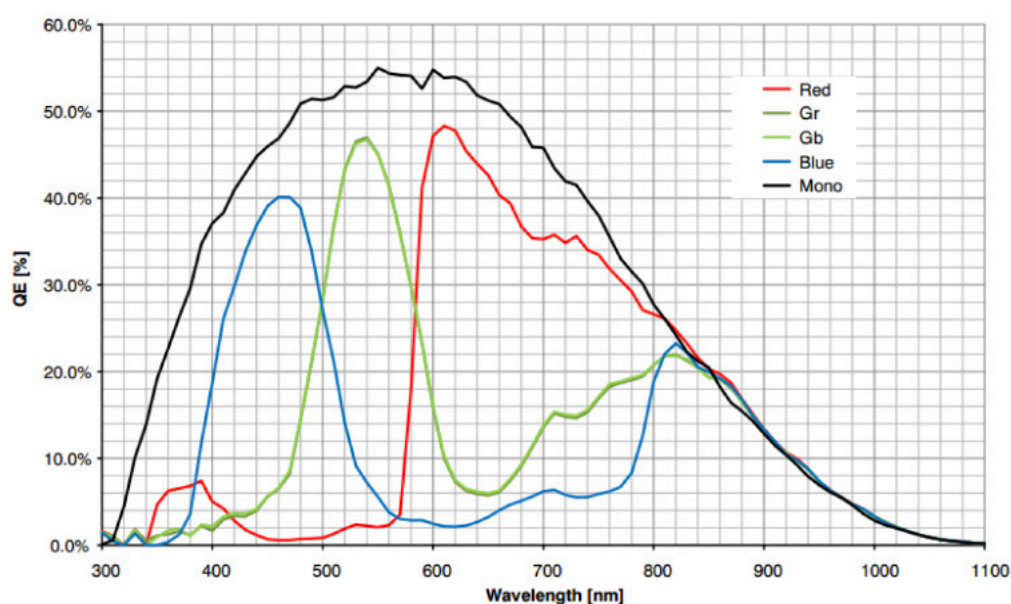
Contrastech LEO Series

Board-level Area Scan Camera

For more info, pls visit:
www.contrastech.com

Specifications

Model	LEO 1300-170um-BL/BS/BC	LEO 1300-170uc-BL/BS/BC
Exposure Time	40 μ s~10s	65 μ s~10s
Image Format	Mono8/10/10p/12/12p	Bayer RG 8/10/10p/12/12p / YUV422Packed / YUV422_YUYV_Packed / RGB8
Dynamic Range	>59.8dB	
Synchronization	Via hardware trigger, via software trigger or free run	
Programmable Control [ISP]	Image Resolution, RGB gain, Exposure Time, Contrast, Gamma Chart, Image Rollover, Raw, LUT	
Temperature	-30~70 ° C (Storage), 0~50° C (Working)	
I/O Control	2 bidirectional custom non-isolation I/O	
Power Input	USB Power Supply	
Driver	LEO Series Camera Software Suite (iDatum) or 3rd party USB3Vision Software	
Operating System	Windows, Linux,Arm	
Confirmity	USB3 Vision, GenICam	



LEO 1300-170um-BL/BS/BC
LEO 1300-170uc-BL/BS/BC

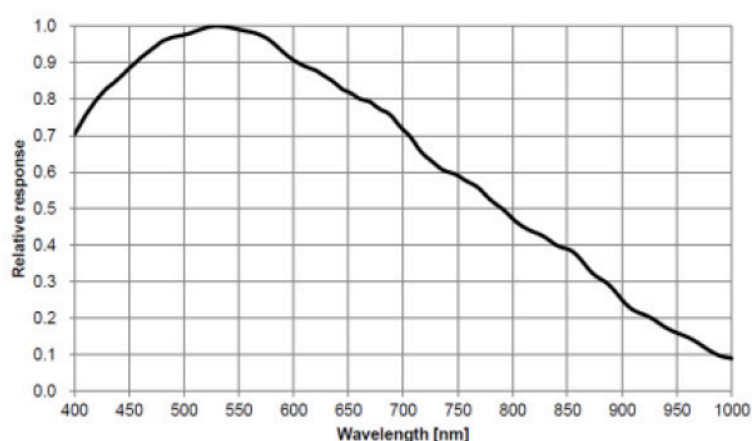
Contrastech LEO Series

Board-level Area Scan Camera

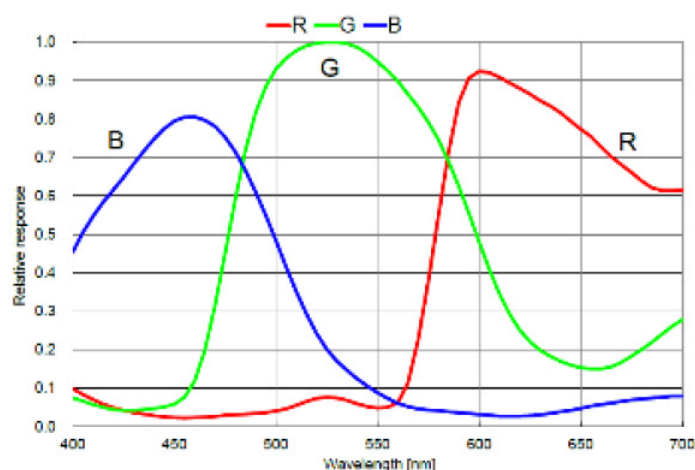
For more info, pls visit:
www.contrastech.com

Specifications

Model	LEO 6000-17um-BL/BS/BC	LEO 6000-29uc-BL/BS/BC
Exposure Time	27 μ s~2s	16 μ s~2s
Image Format	Mono8/10/10p/12/12p	Bayer RG 8/10/10p/12/12p / YUV422Packed / YUV422_YUYV_Packed / RGB8
Dynamic Range	>71.5dB	
Synchronization	Via hardware trigger, via software trigger or free run	
Programmable Control [ISP]	Image Resolution, RGB gain, Exposure Time, Contrast, Gamma Chart, Image Rollover, Raw, LUT	
Temperature	-30~70 ° C (Storage), 0~50° C (Working)	
I/O Control	2 bidirectional custom non-isolation I/O	
Power Input	USB Power Supply	
Driver	LEO Series Camera Software Suite (iDatum) or 3rd party USB3Vision Software	
Operating System	Windows, Linux,Arm	
Confirmity	USB3 Vision, GenICam	



LEO 6000-17um-BL/BS/BC



LEO 6000-29uc-BL/BS/BC

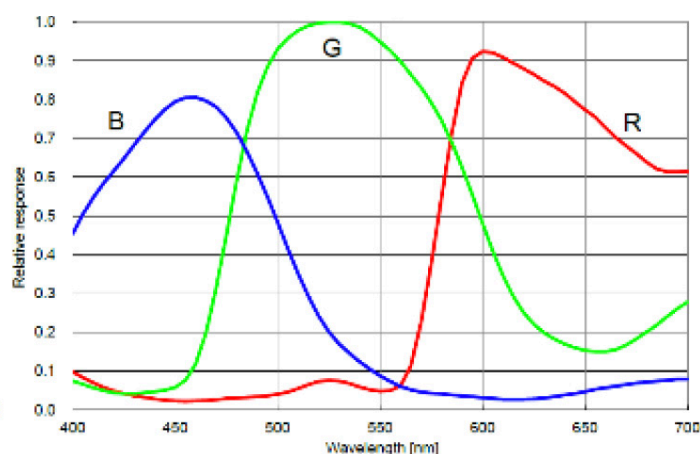
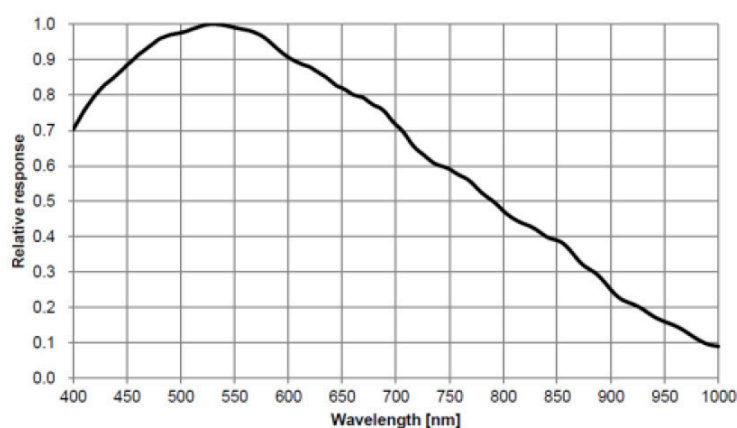
Contrastech LEO Series

Board-level Area Scan Camera

For more info, pls visit:
www.contrastech.com

Specifications

Model	LEO 4020-28um-BL/BS/BC	LEO 4020-21uc-BL/BS/BC
Exposure Time	11 μ s~2s	23 μ s~2s
Image Format	Mono8/10/10p/12/12p	Bayer RG 8/10/10p/12/12p / YUV422Packed / YUV422_YUYV_Packed / RGB8
Dynamic Range	>70.8dB	
Synchronization	Via hardware trigger, via software trigger or free run	
Programmable Control [ISP]	Image Resolution, RGB gain, Exposure Time, Contrast, Gamma Chart, Image Rollover, Raw, LUT	
Temperature	-30~70 ° C (Storage), 0~50° C (Working)	
I/O Control	2 bidirectional custom non-isolation I/O	
Power Input	USB Power Supply	
Driver	LEO Series Camera Software Suite (iDatum) or 3rd party USB3Vision Software	
Operating System	Windows, Linux,Arm	
Confirmity	USB3 Vision, GenICam	



ABOUT US

Hangzhou Contrastech Co.,Ltd. was founded in 2008, which commit to professional machine vision and image technology; it's located in the beautiful paradise city-- Hangzhou. The industrial camera, machine vision light and industrial lens products developed and manufactured by Contrastech Co.,Ltd. have been widely applied in many fields of machine vision, these products have been highly recognized and praised by clients in such fields as industrial inspection, IoT, medical imaging and scientific imaging. Hangzhou Contrastech Co.,Ltd. not only has professional software and hardware R&D team, also has advanced production supply chain. Therefore, Hangzhou Contrastech can provide excellent guarantee for technology and productive capacity.

Hangzhou Contrastech engineers in-depth acquaint themselves with technology application in field of machine vision, to ensure provide independent product with high cost performance, they also integrate channel resources to

provide foreign vision product with leading technologies. For eliminate customer's worries, Hangzhou Contrastech Co.,Ltd. assemble professional engineer team to provide technical support for these products, from the hardware structural design and stable operation to the software programming solution.

Hangzhou Contrastech Co.,Ltd. devote to provide advanced application solutions for clients in the field of vision and image, also provide excellent products and professional services help customers boost their core competitiveness and grow together with customers.



Contact Us

Hangzhou Contrastech Co., Ltd.

Address: No. 8 Xiyuan 9th Road, West Lake District, Hangzhou, China.

Tel: 86-571-89712238

E-mail: market@contrastech.com (Market Dept.)

support@contrastech.com (Support Dept.)

Website: www.contrastech.com